

## Disability Products/Equipment > Homecare Beds [View](#)

Patriot Homecare Bed Full Electric



Patriot Full-Electric Homecare Bed with a GRID SLEEP SURFACE/Patriot Full-Electric Homecare Low Bed Package With Liberty Half Rails, Head & Foot Boards, No Mattress. The single-motor design homecare bed is now available in a full-electric/low version. The Patriot Full-Electric Homecare Bed offers the same features as the Patriot Semi-Electric Homecare Bed with the additional feature of electric height adjustment. This makes it easier for caregivers to raise and lower the bed for patient care and linen changes. The electric height adjustment also enables the patient to easily position the bed for maximum comfort. The full-electric model can be adjusted to be a conventional height homecare bed OR a low bed for better inventory management. Total assembled bed weight only 178 pounds (bed and motor). • Powerful DC motor for effortless height adjustment. • Hi-Lo motor comes pre-installed on foot section for easy set-up and disassembly. • All functions fully-integrated into convenient handheld pendant integrated. • Welded motor guard protects motor and universal joint from damage during shipment and delivery. • Available with Fibreboard Decorative Walnut Bed-ends or High-Impact Plastic Bed-ends. • Designed to meet the requirements of applicable HCPCS codes. • Maximum patient weight 350 lbs. • 450 lb evenly distributed total weight capacity including patient, mattress, rails, and accessories. • Height Adjustment. Casters in Low Position: Min: 8.5", Max: 20" (at deck level) Casters in Standard Position: Min: 17", Max: 23.5" (at deck level) Overall Bed Size: 87" L x 36" W • Lift Range: Head: 60A-A, Knee: 30A-A, • No external pinch points. • Slots in frame to ensure proper rail placement. • Lacking pins secure bed ends to sleep-deck. Attached lampnails prevent low white moving or storing. • Only homecare bed to offer a 4-inch extension kit that can extend either the head, the foot, or both head and foot decking. Bed length will be 84" with one kit, 88" with 2 kits. • The only homecare bed to offer optional corner mattress retainers. • Grid Deck offers the following advantages: • Much stronger frame. • Better mattress support. • No spring sag or bottoming out with heavier patients. • Easier to clean. • No connecting links or springs to lose/Warranty. • Two year warranty for defects in workmanship and materials of mechanical components, frame, and electronics. • During the warranty period, defective items will be repaired or replaced at manufacturer's option. The warranty does not include any labor charges incurred in replacement parts/ installation or any associated freight or shipping charges to the manufacturer. Bed shipped in three cartons: 1. Foot section and motor. 2. Head section and Hi/Lo end. 3. Bed end set. Shipping Included In Price. This is to doonestep. Does Not Include Assembly/Setup & Assembly An Additional Charge!  
**Product Code:** Patriot Full-Electric  
**Category:** Homecare Beds  
**Brand:** Diversa

Patriot Homecare Bed Semi-Electric



Patriot Full-Electric Homecare Bed with a GRID SLEEP SURFACE/Patriot Semi-Electric Homecare Bed Package With Chrome Half Rails, Head & Foot Boards, No Mattress. The single-motor design homecare bed is now available in a full-electric/low version. The Patriot Full-Electric Homecare Bed offers the same features as the Patriot Semi-Electric Homecare Bed with the additional feature of electric height adjustment. This makes it easier for caregivers to raise and lower the bed for patient care and linen changes. The electric height adjustment also enables the patient to easily position the bed for maximum comfort. The full-electric model can be adjusted to be a conventional height homecare bed OR a low bed for better inventory management. Total assembled bed weight only 178 pounds (bed and motor). • Powerful DC motor for effortless height adjustment. • Hi-Lo motor comes pre-installed on foot section for easy set-up and disassembly. • All functions fully-integrated into convenient handheld pendant integrated. • Welded motor guard protects motor and universal joint from damage during shipment and delivery. • Available with Fibreboard Decorative Walnut Bed-ends or High-Impact Plastic Bed-ends. • Designed to meet the requirements of applicable HCPCS codes. • Maximum patient weight 350 lbs. • 450 lb evenly distributed total weight capacity including patient, mattress, rails, and accessories. • Height Adjustment. Casters in Low Position: Min: 8.5", Max: 20" (at deck level) Casters in Standard Position: Min: 17", Max: 23.5" (at deck level) Overall Bed Size: 87" L x 36" W • Lift Range: Head: 60A-A, Knee: 30A-A, • No external pinch points. • Slots in frame to ensure proper rail placement. • Lacking pins secure bed ends to sleep-deck. Attached lampnails prevent low white moving or storing. • Only homecare bed to offer a 4-inch extension kit that can extend either the head, the foot, or both head and foot decking. Bed length will be 84" with one kit, 88" with 2 kits. • The only homecare bed to offer optional corner mattress retainers. • Grid Deck offers the following advantages: • Much stronger frame. • Better mattress support. • No spring sag or bottoming out with heavier patients. • Easier to clean. • No connecting links or springs to lose/Warranty. • Two year warranty for defects in workmanship and materials of mechanical components, frame, and electronics. • During the warranty period, defective items will be repaired or replaced at manufacturer's option. The warranty does not include any labor charges incurred in replacement parts/ installation or any associated freight or shipping charges to the manufacturer. Bed shipped in three cartons: 1. Foot section and motor. 2. Head section and Hi/Lo end. 3. Bed end set. Shipping Included In Price. This is to doonestep. Does Not Include Assembly/Setup & Assembly An Additional Charge!  
**Product Code:** Patriot Semi-Electric  
**Category:** Homecare Beds  
**Brand:** Diversa

Patriot LX Full Electric Home Care Bed



Robust steel grid deck surface offers superior mattress support/Head and foot sections can be raised or lowered simultaneously with one hand/Recessed frame offers maximum pinch point protection/easy single and efficient installation/reduced time needed to assemble and operate/Dual Hi/Lo motors adjust from 10" to 20" allows tremendous range and slant positioning/single motor unit is designed for easy installation, low maintenance and provides smooth quiet head and foot articulation/Attractive "home-like" thermo-insulated bed ends offer a low institutional look and eliminates a bed component that requires repair and maintenance/Frame stabilizations an anti-microbial technology built into the paint that protects against bacteria and odor 4" extension kit can be added to either head or foot extending the bed to 84" or 88" Shipping Additional/Price is bed with half rails only without casters and extensions/No Mattress  
**Product Code:** Patriot LX Full  
**Category:** Homecare Beds  
**Brand:** Diversa

## Disability Products/Equipment > Stair Chairs [View](#)

### Horizon Stair Lift Chair



The Horizon Standard Straight Lift Chair features: Easy to use joy stick for control Secure Key Operation for safety Side mounted swivel levers Fixed seat and seat pad Manual swivel seat The Horizon has a 300lb weight capacity limit Anodized aluminum single rail Track Length included is standard up to 14 foot Maximum optional track length of 55 foot 4 inches Rail angles 25 degrees to 55 degrees Digital diagnostics display in carriage Infra-Red remote controls Lap seat belt Beige Color Optional Horizon Outdoor with 14 day lead time Shipping Additional Installation Available! Please call for personal site quote. Any permits required for installation additional Shipping Additional!  
**Product Code:** Horizon Standard  
**Category:** Stair Chairs  
**Brand:** Diversa

### Rubex AC Stair Lift



The Rubex AC Stair Lift is ETL listed and meets ASME A17.1 and A18 safety standards for public and private use. Call stations are included at top and bottom landings which can be mounted to the wall or the floor. Simple installation. Installs on either side of staircase. Mounts to stairs, not the wall. Travel up to 25 feet. Extruded aluminum track is cut to fit your stairs. Track only takes up to 11.4" of space and folds to 14" from wall. Unit controls mount to either armrest, pendant available. Wall mounted send/call controls. Constant pressure controls stop the lift the instant you release the control. Limit switches automatically shut the unit off at the top and bottom of your stairs. Footrest safety sensors automatically stop the lift should it come in contact with anything on the stairs. Wide, comfortable seat swivels 90 degrees toward landing on each level for safe and easy enter and exit. Safety switch prevents lift from running when seat is not in proper position. 300lbs (DC)/ 350lbs (AC) capacity, aircraft cable rated for 4,200lbs. Durable off white powder coating. Operates on standard household current 110 VAC grounded outlet. Smooth starts and stops. Optional side-car basket to carry groceries. Track Length of 15' is standard. Track length 16' and over reduces capacity to 250lbs. Made in USA. Installation Available! Call for on site inspection for quote! Permits, if required for installation, are additional. Shipping Additional!

**Product Code:** Rubex

**Category:** [Stair Chairs](#)

**Brand:** Diversa

## [Platinum Curved Stair Lift Chair Standard](#)



The Platinum Curved Stair Lift allows you to adjust your home to you. Max 264 pound weight capacity is standard with a 352 pound Heavy Duty version available also. Smooth quiet and gentle ride. Twin rail mechanical leveling system provides for a more stable and gentler travel on turns and corners. Full LED Diagnostic system - indicates lift functions and service information. Retractable seat belt and key switch as standard. Lift folds neatly away when not in use. Large range of options available including powered swivel seats and powered foot rest raisers. Hand built to your bespoke specifications. Available in Beige, Red, or Blue seat color. Available in two seating configurations. Custom color rails available. Standard track 19'. Installation Available! We request inspecting the location for quote. Shipping Additional! Any permits required in area additional.

**Product Code:** Platinum Curve Standard  
**Category:** [Stair Chairs](#)  
**Brand:** Diversa

## Disability Products/Equipment > Walk-in Bathtubs & Showers [View](#)

### [Sanctuary Walk-in Tub](#)



Shown with optional End Panel

Inward swinging door. Front loading/walk-in. 7 layer fibreglas with marine grade resin. 3 layer marine gel coat finish. Includes faucets. Includes grab bars. Optional Whirlpool & Air Jet System. Available in multiple sizes. One year parts and labor warranty. Installation Available! Shipping Additional!

**Product Code:** Sanctuary  
**Category:** [Walk-in Bathtubs & Showers](#)  
**Brand:** Diversa

## Sanctuary Deep Water Walk-In Tub



Shown with optional End Panel

Deepest tub for greater immersion. 46.5" tub height. Grab bars included. Faucets included. 6" Step height and 17" Seat height. 7 Layer fiberglass with marine grade resin. 3 Layer marine gel coat for finish. Optional Whirlpool & Air Jet Systems. One year parts and labor warranty. Installation Available! Shipping Additional

**Product Code:** Sanctuary Deep Water  
**Category:** [Walk-in Bathtubs & Showers](#)

**Brand:** Diversa

## Sanctuary Large Wheelchair Access Access Tub



Easy access for users who need to transfer into tub. Large outward swinging door exposes the entire seat profile. Seat height 22". Fits a standard 60" enclosure. Enclosed on front and both sides. Optional Whirlpool & Air Jet Systems. 30" W x 60" L x 42" H. Installation Available! Shipping Additional

**Product Code:** Sanctuary Wheelchair  
**Category:** [Walk-in Bathtubs & Showers](#)

**Brand:** Diversa

## Sanctuary Medium Shower Enclosure Walk In Tub



Includes a walk-in tub and shower enclosure. Shower enclosure sits on top of the tub. Headrest, mirror and toiletry shelves included. Made in durable industrial grade acrylic. Outward swinging door either right or left side. 6.5" step height, 15" seat height. Optional Whirlpool & Air Jet System. Available in small or medium sizes. Installation Available! Shipping Additional

**Product Code:** Shower Enclosure

**Category:** [Walk-in Bathtubs & Showers](#)

**Brand:** Diversa

## Disability Products/Equipment > Scooters & Powered Wheelchairs

[View](#)

### [Spitfire EX2 4 Wheel Travel Scooter](#)



300 lb Capacity. 12 month warranty on batteries, 24 month warranty of electronics, limited lifetime warranty of frame, 6 Sets of interchangeable color panels in red, blue, silver, black, white, pink. Includes swivel mount cup holder. Extra bright LED headlight. Charge ports located on the tiller and the battery pack for easy charging. Height adjustable swivel seat. Adjustable padded armrests with rear reflectors. Large plastic basket with removable liner. Dissassembles into 5 easy pieces. Delta tiller for easy throttle control.

**Product Code:** Spitfire EX2

**Category:** [Scooters & Powered Wheelchairs](#)

**Brand:** Diversa

### [Spitfire DST 4 Wheel Travel Scooter](#)



325 lb capacity.12 month warranty on batteries, 24 month on electronics and suspension, limited lifetime on frame.DST - Dynamnic Suspension Technology features front and rear suspension coils for comfortable travel accross terrain.Charge port located on control panel and battery for easy charging.HeadlightInterchangeable color panels in red and blue.Easy disassembly.Armrests are padded, contoured, width and angle adjustable.Delta tiller with ergonomic throttle control.Armrest covers with reflectors.Large plastic basket with carry handle.Height adjustable swival seat with fold down backrest.Anti-tip wheels.

**Product Code:** Spitfire DST 4 Wheel

**Category:** [Scooters & Powered Wheelchairs](#)

**Brand:** Diversa

### King Cobra PGV Executive Scooter



425 lb capacity.12 month battery warranty, 24 month electronic controlers, 24 month drive train, limited lifetime frame warranty.Personal golf cart with hard top canopy and golf bag attachment.Intuitive drive system for ultimate stability.Front and rear suspension for the smoothest ride possible.6" wide turf tires for all types of terrain.Built in USB port for charging mobile devices.Built in cup holder to conveniently carry your drinks.Storage compartment built into tiller.One-touch, infinite tiller adjustment allows the driver to position the tiller into the ideal driving position.Ergonomic delta control handles for ease of steering and throttle control.22" Wide x 20" Deep Sports style Captains seat is height.adjustable and features a fold-down, reclining backrest.

**Product Code:** King Cobra PGV

**Category:** [Scooters & Powered Wheelchairs](#)

**Brand:** Diversa

### Panther Heavy Duty 4 Wheel Scooter



425 lb weight capacity. 12 month warranty on battery, 24 month electronic warranty, limited lifetime on frame. Front and rear suspension on 14" tires for smoothest ride possible. One-touch, infinite tiller adjustment allows the user to easily position the tiller into a comfortable driving position. Extra bright LED headlight for superb visibility. Ergonomic Delta control handles for ease of steering and throttle control. Large front plastic basket with carry handle. 22" Wide and 20" Deep Captains seat is height adjustable and features a fold-down, reclining backrest with adjustable headrest. Hazard lights, turn signals, and reflectors for superb visibility. Dual rear-view mirrors. Positioning belt. Anti-tip wheels. Easy, free wheel mode. USB port for charging.

**Product Code:** Panther HD 4 Wheel Scoote

**Category:** [Scooters & Powered Wheelchairs](#)

**Brand:** Diversa

#### Phoenix HD 4



350 lb weight capacity. 12 month warranty battery, 24 month electronics and drive train, limited lifetime frame warranty. Quick and easy disassembly. Includes interchangeable color panels in red and blue. Armrests padded and adjustable. Quick connect battery. Ergonomic throttle control. Height-adjustable swivel seat with two-tone upholstery. Flat-free, non marking tires. Large, plastic carry basket. Easy-to-adjust tiller. Anti-tip wheels. Headlight Swivel seat with fold-down backrest. Easy free wheel operation.

**Product Code:** Phoenix HD

**Category:** [Scooters & Powered Wheelchairs](#)

**Brand:** Diversa

**Simulation/Models > Airway Management** [View](#)

[Tracheostomy Care Sim](#)



Life/form® Tracheostomy Care Simulator Comes complete with instruction guide and hard carry case. Tracheostomy tube is not included. Size: 21" x 21" x 11" Shipping Included  
**Product Code:** LF01083U  
**Category:** [Airway Management](#)  
**Brand:** Diversa

### Infant Airway Mgmt. Head



Life/form® Infant Airway Management Trainer Head Three year warranty. Comes with a pump spray lubricant. Shipping Included  
**Product Code:** LF03621UG  
**Category:** [Airway Management](#)  
**Brand:** Diversa

### Infant Airway Mgmt w/ Stand





Life/form® Infant Airway Management Trainer with Stand Includes training stand to mount head, pump spray lubricant, and hard carrying case. Three year warranty. Shipping Included  
**Product Code:** LF03623UG  
**Category:** [Airway Management](#)  
**Brand:** Diversa

### ?Airway Larry? Mgmt Trainer



Life/form® "Airway Larry" Adult Airway Management Trainer Head Three year warranty. Shipping included.  
**Product Code:** LF03667UG  
**Category:** [Airway Management](#)  
**Brand:** Diversa

### ?Airway Larry" w/ Stand



Life/form® “Airway Larry” Adult Airway Management Trainer with Stand Comes with training stand to mount head, pump spray lubricant, and hand carrying hard case. Three year warranty Shipping Included  
**Product Code:** LF03699UG  
**Category:** [Airway Management](#)  
**Brand:** Diversa

**Simulation/Models > Specialty Simulators** [View](#)

[Ostomy Care Simulator](#)



Designed to help introduce the essentials of ostomy care to patients and students, this unit is ideal for demonstration and practice for several procedures. The anatomy of both a colostomy and ileostomy are carefully reproduced to provide lifelike functions and appearance. Dilation of the stomas can be demonstrated and practiced, along with application of postoperative and permanent ostomy bags. The colostomy can actually be irrigated. Syringes are included to pump materials through the unit to provide drainage and excretion at the ileostomy and colostomy. The syringes are inserted through ports in the back of the simulator. One pumps the ileostomy with clear water, or water tinted for exact realism, and the other syringe pumps synthetic stool to the colostomy. The consistency of the stool can be varied by using water to thin the material, and most of the stool can be salvaged and reused. A soft, pliable material is used for the stomas in order to achieve a most realistic tactile sensation. Complete with a hard carry case, teaching guide, and supply of simulated stool. Size: 18" x 18" x 12". Three year warranty. Shipping included  
**Product Code:** LF00906UG  
**Category:** [Specialty Simulators](#)  
**Brand:** Diversa

**CAPD Simulator**



Life/form® Peritoneal Dialysis Simulator for Continuous Ambulatory Peritoneal Dialysis Complete with indwelling Tenckhoff catheter in a hard carry case. Dialysis materials not included. Shipping Included  
**Product Code:** LF01027U  
**Category:** Specialty Simulators  
**Brand:** Diversa

### Cath Ed 1 & 2 Set



Catheter Ed 1 and Catheter Ed 2 Simulators Each simulator includes a hard carrying case, lubricant, one catheter, 50 cc bulb, syringe, and instruction manual. Size: 15" x 14" x 8". Shipping Included  
**Product Code:** LF01029U  
**Category:** Specialty Simulators  
**Brand:** Diversa

### Intraosseous Infusion Sim



Life/form® Intraosseous Infusion Simulator Included with the simulator are 10 replaceable bone inserts, two sets of replacement leg skins, two white towelettes, syringe with tubing, blood powder, sealing wax, 1/2 oz. liquid lubricant, mixing bottle, needle, and hard carrying case. Shipping Included  
**Product Code:** LF01108U  
**Category:** Specialty Simulators  
**Brand:** Diversa

### Pericardiocentesis Sim



Life/form® Pericardiocentesis Simulator Includes fluid reservoir bag, foot pump, surgical skin pads, subcutaneous surgical pads, nurse training pads, pneumothorax pads, blood powder, methyl cellulose thickener, simulated pericardium, IV bag, and a hard carry case. Three year warranty. Shipping included  
**Product Code:** LF03769UG  
**Category:** Specialty Simulators  
**Brand:** Diversa

### Nasco Cleaner



Nasco Cleaner Use to remove stubborn stains from Life/form® simulators. 12-oz. bottle. Shipping Included.

**Product Code:** LF09919U

**Category:** [Specialty Simulators](#)

**Brand:** Diversa

### SimScope Hybrid Simulator<sup>®</sup>,<sup>¢</sup>



Offers real-time, seamless, standardized patient interaction and assessment. The scope plays the programmed heart, breath, and bowel sounds specific to each correct anatomical location, enabling a realistic standardized patient encounter. Ideal for use with Standardized Patient and O.S.C.E. programs.

**Product Code:** 2784

**Category:** [Specialty Simulators](#)

**Brand:** Diversa

## Simulation/Models > Suture & Stapler Simulators [View](#)

### [Suture Practice Arm](#)



Life/form® Suture Practice Arm Comes complete with a starter package of sutures and instruction booklet. Shipping Included

**Product Code:** LF01028U

**Category:** [Suture & Stapler Simulators](#)

**Brand:** Diversa

### Suture/Staple Practice



Life/form® Suture and Stapling Practice Trainer Set Set consists of one Practice Arm (LF01028U) and one Practice Leg (LF01034U). Each trainer comes with a starter package of sutures and instruction booklet. Shipping Included

**Product Code:** LF01031U

**Category:** [Suture & Stapler Simulators](#)

**Brand:** Diversa

### Suture Kit-White



Life/form® Suture Kit - White Includes suture pad, tray to hold pad, durable carry case, needle holder, suture scissors, tissue forceps, scalpel, nylon suture, and small carry case to hold the instruments. Pad measures 6" L x 4" W x 1-1/2" D. Shipping Included  
**Product Code:** LF01042U  
**Category:** Suture & Stapler Simulators  
**Brand:** Diversa

### Suture Kit-Black



Life/form® Suture Kit - Black Includes suture pad, tray to hold pad, durable carry case, needle holder, suture scissors, tissue forceps, scalpel, nylon suture, and small carry case to hold the instruments. Pad measures 6" L x 4" W x 1-1/2" D. Shipping Included  
**Product Code:** LF01057U  
**Category:** Suture & Stapler Simulators  
**Brand:** Diversa

### Flat Skin Pad For Suturing, Stapling, & Punching, EA





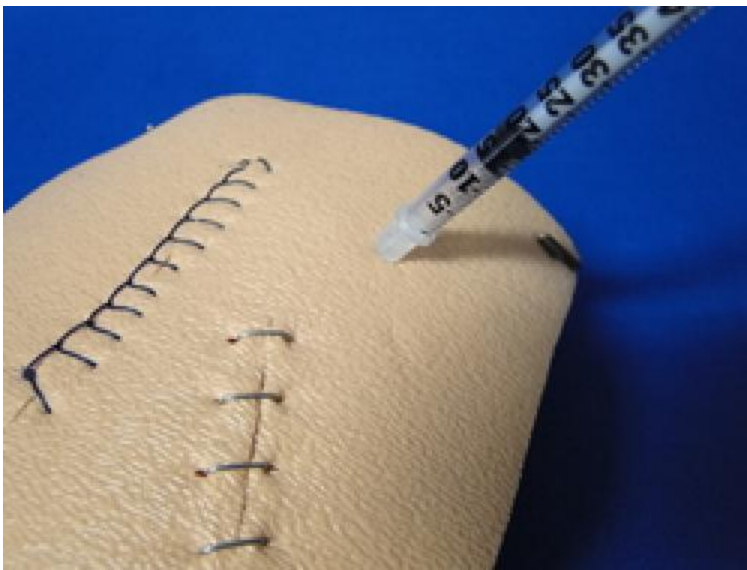
Great for basic suturing or stapling of skin. Contains an epidermis, dermis, and subcutaneous layer. 6" x 6". Procedures: local anesthesia injection, nerve block, simple interrupted, vertical mattress, horizontal mattress, buried dermal, buried vertical mattress, buried horizontal mattress, simple running, running locked, and running horizontal mattress.

**Product Code:** SB50118U

**Category:** [Suture & Stapler Simulators](#)

**Brand:** Diversa

### [TSkin Flat Skin Pad For Suturing, Stapling, & Punching, EA](#)



Great for basic suturing or stapling of skin. Contains an epidermis, dermis, and subcutaneous layer. 4" x 4", 3/4" Thick. Procedures for training: local anesthesia injection, nerve block, simple interrupted, vertical mattress, horizontal mattress, buried dermal, buried vertical mattress, buried horizontal mattress, simple running, running locked, and running horizontal mattress. Base for holding skin also available, see next item.

**Product Code:** TS Skin

**Category:** [Suture & Stapler Simulators](#)

**Brand:** Diversa

## [Simulation/Models > CPR Simulators](#) [View](#)

### [Basic Buddy? CPR Manikin](#)



Life/form® Basic Buddy™ Single CPR Manikin Consists of 1 manikin, 10 lung/mouth protection bags, one insertion tool, and an instruction manual. Shipping Included  
**Product Code:** LF03693U  
**Category:** [CPR Simulators](#)  
**Brand:** Diversa

### Basic Buddy? CPR 5-Pack



Life/form® Basic Buddy™ CPR Manikin 5-Pack Consists of five adult/child manikins, 50 lung/mouth protection bags, five lung insertion tools, one carrying case, and an instruction manual. Shipping Included  
**Product Code:** LF03694U  
**Category:** [CPR Simulators](#)  
**Brand:** Diversa

### Basic Buddy? CPR Lung Bags



Basic Buddy™ CPR Manikin  
Lung/Mouth Protection Bags Package of  
100. Shipping Included  
**Product Code:** LF03696U  
**Category:** [CPR Simulators](#)  
**Brand:** Diversa

### Basic Buddy? Carry Bag



Basic Buddy™ CPR Manikin Carry  
Bag Holds five fully assembled Basic  
Buddy™ manikins. Shipping Included  
**Product Code:** LF03697U  
**Category:** [CPR Simulators](#)  
**Brand:** Diversa

### CPARLENE? w/ Electronics



Life/form® CPARLENE® Full Manikin with Electronic Connections - White Includes 10 disposable airways, 10 disposable tracheal airways, and five sanitary face masks. All units are powered by “C” or “D” batteries, and change from adult to child readings with the flip of a switch. This CPARLENE® Full Manikin with Electronic Connections can be used with any of the Life/form® external electronic monitors, which consist of the Electronic Monitoring, Memory, and Printer Unit (LF03401U), the Electronic Monitoring and Memory Unit (LF03402U), and the Light Controller (LF03403U). Includes a washable jogging suit, child springs, supplies, and a durable carry case with wheels. Jaw thrust feature. Shipping Included

**Product Code:** LF03713U

**Category:** [CPR Simulators](#)

**Brand:** Diversa

## CPARLENE® Torso



Life/form® CPARLENE® Torso with Electronic Connections - White Includes 10 disposable airways, 10 disposable tracheal airways, and five sanitary face masks. All units are powered by “C” or “D” batteries, and change from adult to child readings with the flip of a switch. This CPARLENE® Torso with Electronic Connections can be used with any of the CPARLENE® external electronic monitors, which consist of the Electronic Monitoring, Memory, and Printer Unit (LF03401U), the Electronic Monitoring and Memory Unit (LF03402U), and the Light Controller (LF03403U). Includes a washable, short sleeve athletic jacket, child springs, supplies, and a durable travel/storage case with wheels. Jaw thrust feature. For use with Life/form® external electronic CPR monitors. Shipping Included

**Product Code:** LF03715U

**Category:** [CPR Simulators](#)

**Brand:** Diversa

## Baby Buddy® CPR Manikin



Life/form® Baby Buddy™ Single CPR Manikin Consists of one infant manikin, size: 20" x 14" x 7", 10 lung/mouth protection bags, one insertion tool, and an instruction manual. Shipping Included

**Product Code:** LF03720

**Category:** [CPR Simulators](#)

**Brand:** Diversa

### Baby Buddy? CPR 5-Pack



Life/form® Baby Buddy™ CPR Manikin 5-Pack Consists of five infant manikins, 50 lung/mouth protection bags, carrying bag, five lung insertion tools, and an instruction manual. Shipping Included

**Product Code:** LF03721

**Category:** [CPR Simulators](#)

**Brand:** Diversa

### Baby Buddy? Manikin Bags



Baby Buddy™ CPR Manikin  
Lung/Mouth Protection Bags Package of  
100. Shipping Included  
**Product Code:** LF03723  
**Category:** [CPR Simulators](#)  
**Brand:** Diversa

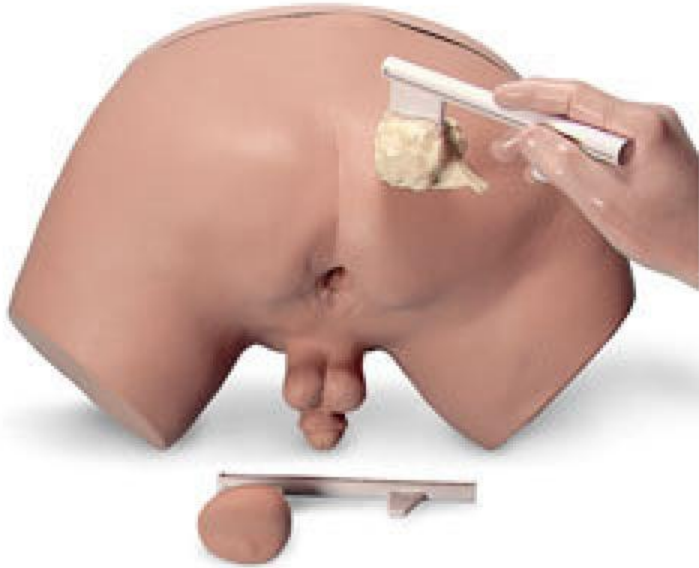
## Simulation/Models > Basic Examination Simulators [View](#)

### [Blood Pressure Cuff Assembly](#)



For use with ALS Simulator Blood  
Pressure Training Arm MegaCode  
Kelly™ Nursing Anne Nursing  
Kelly Resusci Anne®  
Simulator SimMan® 3G SimMan®  
Essential SimMom™ SimPad® Blood  
Pressure Trainer Shipping additional  
**Product Code:** 200-00550  
**Category:** [Basic Examination  
Simulators](#)  
**Brand:** Diversa

### [Prostate Exam Simulator](#)



The Prostate Examination Simulator is an indispensable model for both students and professionals. Instructors have the ability to teach techniques of prostate examination with no harm or embarrassment to real patients. Four separate prostate glands are supplied with the torso, representing one benign gland and three stages of prostatic carcinoma in varying degrees of development. Each gland can be inserted into the prostate torso to allow realistic practice in diagnosis by rectal palpation.

**STAGE A GLAND** - Benign, slightly enlarged, but otherwise normal prostate gland.

**STAGE B GLAND** - A discrete, hard nodule is palpable in the upper right quadrant. This simulates a beginning stage of carcinoma.

**STAGE C GLAND** - The spread of carcinoma is demonstrated in this gland. The small nodule has increased in size and has become an external hard mass on the surface of the gland.

**STAGE D GLAND** - This gland is totally replaced with carcinoma. The entire gland will feel hard and irregular.

Life/form® Prostate Examination Simulator is complete with four glands, hard carrying case, lubricant, and teaching guide. Size: 22" W x 15" D x 12" H. Three year warranty. Shipping included

**Product Code:** LF00901UG  
**Category:** [Basic Examination Simulators](#)  
**Brand:** Diversa

## Non-Pitting Edema Trainer



The Life/form® Non-Pitting Edema Trainer represents a non-pitting stage of edema, also known as brawny edema, which is a very hard, fibrotic tissue that does not indent when pressed. The life-like simulated tissue feels rock-hard, making pitting impossible. For comparison, the trainer also includes a Stage 3+ (6mm) edema pad with deep pitting that remains for a short time when the tissue is pressed. Includes two tissue pads representing a non-pitting stage and a pitting stage, insert tray, key card with cleaning/care instructions, and storage box. Shipping included

**Product Code:** LF00946U

**Category:** [Basic Examination Simulators](#)

**Brand:** Diversa

### **Pitting Edema Trainer**



The Life/form® Pitting Edema Trainer uses life-like simulated tissue to demonstrate Stages 1+ through 4+: Shipping Included

**Product Code:** LF00947U

**Category:** [Basic Examination Simulators](#)

**Brand:** Diversa

### **Advanced Breast Exam Sim.**





Life/form® Advanced Breast Exam Simulator Includes a rigid underbody, right and left breast inserts, overlay skin, three tumor sets (27 lumps), nine soft lumps to represent soft breast tissue, one hard lump to represent chestwall infiltration, baby powder, hard carrying case, and instruction manual. Torso size: 14" W x 11" H x 6" D. Three year warranty. Shipping Included

**Product Code:** LF00980UG

**Category:** [Basic Examination Simulators](#)

**Brand:** Diversa

### Ear Exam Simulator



Life/form® Ear Examination Simulator and Basic Nursing Set Includes normal tympanic membrane (photo embedded); mucoid otitis media (photo embedded); serous otitis media with fluid level (photo embedded); chronic otitis media with perforation (photo embedded); normal tympanic membrane with slanted ear canal (photo embedded); normal ear without photo for earwax removal exercise; two tubes of synthetic earwax; a set of nine 35 mm slides; instructions; and hard carrying case. Shipping Included

**Product Code:** LF01019U

**Category:** [Basic Examination Simulators](#)

**Brand:** Diversa

### Sigmoid Exam Sim



Life/form® Colonoscope Examination Simulator  
Life/form® Colonoscope Examination Simulator is available on a solid oak stand complete with lubricant, instruction guide, and hard carry case. Shipping Included

**Product Code:** LF01084U

**Category:** [Basic Examination Simulators](#)

**Brand:** Diversa

### Deluxe Blood Pressure Sim



Life/form® Deluxe Blood Pressure Simulator with Speaker System  
Includes Blood Pressure Simulator (LF01095U) and an Amplifier/Speaker System (LF01189U). For auscultatory blood pressure only. Shipping Included

**Product Code:** LF01129U

**Category:** [Basic Examination Simulators](#)

**Brand:** Diversa

### Auscultation Trainer /Smartscope?



Life/form® Auscultation Trainer and SmartScope™ Includes manikin, one remote control with LCD display, one SmartScope™ with single- and dual-user headpieces, and hard carry case. Operates using two “AA” and two “AAA” batteries (included). Three year warranty Shipping Included  
**Product Code:** LF01142UG  
**Category:** [Basic Examination Simulators](#)  
**Brand:** Diversa

## Anatomical Breast



Anatomical Breast Includes carrying case, slipcover, and penlight. Shipping Included  
**Product Code:** SB13139U  
**Category:** [Basic Examination Simulators](#)  
**Brand:** Diversa

## Testicle Model



Testicle Model - 2 Lumps in 1  
Testicle Shipping included

**Product Code:** SB41580U  
**Category:** [Basic Examination  
Simulators](#)

**Brand:** Diversa

## BSE Trainer



BSE Trainer This Breast Self Examination (BSE) Trainer is a flesh-based product for realistic practice. Within the breast resides five lumps representing different disease states: cysts (fluid related), fibroadenomas (calcifications), sclerosing adenosis, or fat necrosis. The filling is a water-based gel that emulates the natural consistency of a breast. The material is also very durable so that constant use in labs or teaching facilities won't wear it out or tear it. Three-year warranty. Shipping included

**Product Code:** SB43000G  
**Category:** [Basic Examination  
Simulators](#)

**Brand:** Diversa

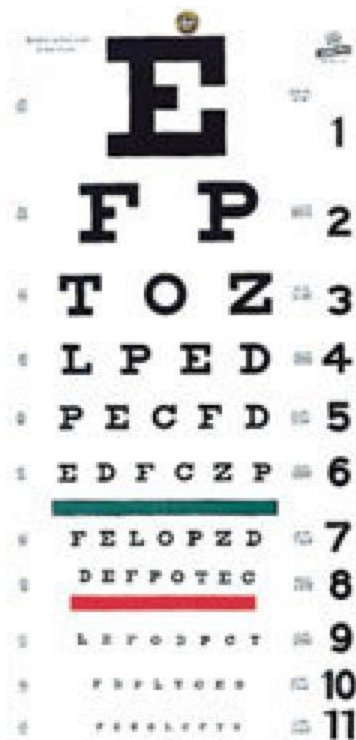
## Breast Palpatation Trainer



Advanced Patient Care Breast Palpation Trainer Seven interchangeable breasts demonstrate chronic mastitis, benign growth, carcinoma and the “skin orange” effect, giant sarcoma, scirrhous carcinoma, the lymphatic drainage system, and the movement of the mammary gland on the surface of the pectoralis major muscle for comprehensive training. The soft, vinyl trainer is mounted on a Lucite® stand. Includes instruction manual and a soft nylon carrying bag. Shipping Included  
**Product Code:** SB43106U  
**Category:** [Basic Examination Simulators](#)  
**Brand:** Diversa

## Simulation/Models > General Training Aids [View](#)

### [Snellen Plastic Eye Chart](#)



Non-reflective, matte finish with green and red color bars. 20' distance. 22" x 11". The Snellen eye chart is the familiar chart with the big letter or symbol at the top and progressively smaller letters at the bottom of the chart down to 20/20 or better. This is a chart for measuring visual acuity at a distance - in other words, how well you can see things that are far away.

**Product Code:** 1240  
**Category:** [General Training Aids](#)  
**Brand:** Diversa

### [Human Skeleton w/ Stand](#)



Life-size replica skeleton shows all of the skeleton parts in great detail. Hand assembled to provide intricate details and long-lasting durability. The main joints are articulated and the upper and lower limbs can be removed easily. The following parts are detachable: calvarium, skull, jaw, arms, and legs. Supplied with a five-caster roller stand and transparent dust cover. 5-1/2 ft.

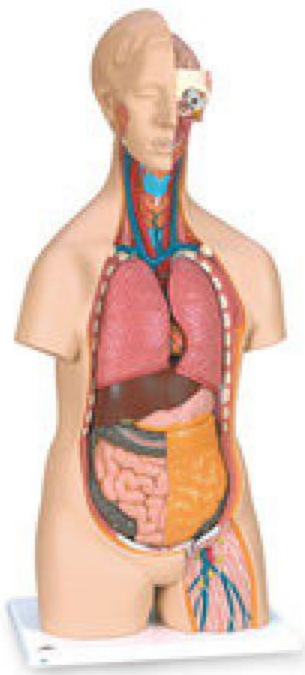
H.Shipping included

**Product Code:** LA00101U

**Category:** [General Training Aids](#)

**Brand:** Diversa

### Scientific? Unisex Torso



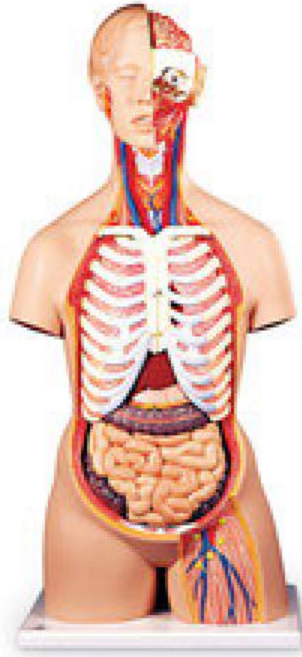
Classic 3B Scientific® Unisex Torso (14-Parts)The most popular torso for schools comes with removable:• 3-part head• 2 lungs• 2-part heart• Stomach• Liver with gall bladder• 2-part intestine system• Front kidney half• Front bladder halfComes with 3B Torso Teaching Guide. 34-1/4" x 15" x 9-7/8".Shipping Included

**Product Code:** SB41420U

**Category:** [General Training Aids](#)

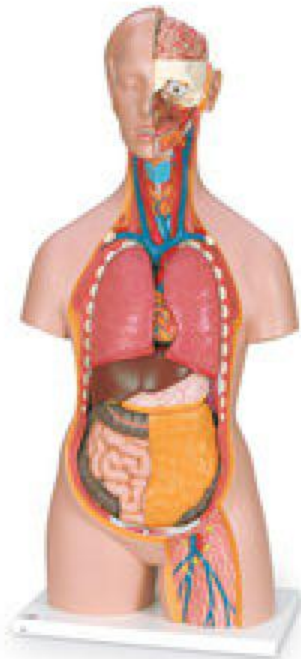
**Brand:** Diversa

### Torso w/ Neck, Back



Classic 3B Scientific® Unisex Torso with Opened Neck and Back (21-Part) The neck and back are exposed from the cerebellum to the coccyx. Vertebrae, intervertebral discs, spinal cord, spinal nerves, vertebral arteries, and much more are represented in great detail. Features all removable parts found in our Classic Unisex Torso (LY01010U) with the following upgrades:• 7th thoracic vertebra• 6-part head• 2-part stomach• Brain Comes with 3B Torso Teaching Guide. Hand-painted, high-quality plastic. 34-1/4" x 15" x 9-7/8".Shipping Included  
**Product Code:** SB41421U  
**Category:** [General Training Aids](#)  
**Brand:** Diversa

### Classic Unisex Torso



Classic 3B Scientific® Unisex Torso with Opened Neck and Back (18-Part) This human unisex torso has the unique feature of an open neck and back section going from the cerebellum to the coccyx. Vertebrae, intervertebral discs, spinal cord, spinal nerves, vertebral arteries, and much more are shown in great detail in this colorful replica of the human anatomy. Contains all removable parts found in the Classic Unisex Torso (LY01010U) with the following upgrades or differences:• 7th thoracic vertebra• 6-part head• 2-part intestine system Comes with 3B Torso Teaching Guide. Hand-painted, high-quality plastic. 34-1/4" x 15" x 9-7/8".Shipping Included  
**Product Code:** SB41506U  
**Category:** [General Training Aids](#)  
**Brand:** Diversa

### Chart for Blood Vessels/Nerves



Laminated 3B Scientific® Anatomical Chart for Clinically Important Blood Vessels and Nerve Pathways Shipping Included  
Product Code: SB41520U  
Category: General Training Aids  
Brand: Diversa

## Skeleton Dust Cover



Skeleton Dust Cover Protect your investment with this heavy duty protective cover. Suitable for all full-size skeletons and stand versions. Black in color with transparent window. Shipping included  
Product Code: SB45480U  
Category: General Training Aids  
Brand: Diversa

## Dictionary of Nursing





second edition

# Dictionary of Nursing

OVER 11,000 TERMS CLEARLY DEFINED

Dictionary of Nursing 352 pages. Softcover. This fully-updated edition offers over 11,000 entries, each providing clear, up-to-date coverage of specialist nursing terms including diseases, symptoms, anatomy, instruments, common drugs, and biological terms. It covers both everyday vocabulary relating to patient care and terms from medical specializations such as psychiatry. Copyright 2007. Shipping Included  
**Product Code:** SB47338U  
**Category:** [General Training Aids](#)  
**Brand:** Diversa

## 5-lb Body Fat Replica



5-lb. Life/form® Body Fat Replica  
Replica represents approximate volume of real fatty tissue; weights vary. Shipping included  
**Product Code:** WA04313U  
**Category:** [General Training Aids](#)  
**Brand:** Diversa

## 1-lb / 5-lb Fat Replicas



Life/form® 1-lb. and 5-lb. Fat Replicas These fat replicas represent approximate volume of fatty tissue; weights vary. Made of long-lasting vinyl plastic. Includes 1-lb. Fat Replica (WA14533U), 5-lb. Fat Replica (WA04313U). Shipping included  
**Product Code:** WA14574U  
**Category:** [General Training Aids](#)  
**Brand:** Diversa

### Dual-Sex Muscle Torso



Deluxe Dual-Sex Muscle Torso with Opened Neck and Back (31-Parts) The following parts can be removed:

- 7th thoracic vertebra
- 6-part head
- Breast covering with muscles
- Mammary gland
- M. gluteus maximus
- M. deltoideus
- 2 lungs
- 2-part heart
- 2-part stomach
- Liver with gall bladder
- 4-part intestine system
- Front kidney half
- 4-part male genital insert
- 3-part female genital insert with embryo

Comes with 3B Torso-Teaching-Guide 34-1/4" x 15" x 9-7/8". Shipping Included  
**Product Code:** SB41423U-2  
**Category:** [General Training Aids](#)  
**Brand:** Diversa

### Nasco®™s Heart & Lung Sites Visual Aids Poster Set



These visual aids have been developed specifically to enhance instruction and study of anterior and posterior heart and lung auscultation site locations. The posters are laminated and perfect for mounting in a classroom or skills lab. Includes Anterior Heart & Lung Sites poster (LF00680U) and Posterior Lung Sites poster (LF00681U). These teaching aids will enhance auscultation education.

**Lung Conditions:**

- Bronchial
- Bronchovesicular
- Cavernous
- Coarse Crackle
- Egophony
- Fine Crackle
- Friction Rub
- Infant
- Mono Wheeze
- Normal Lung
- Pectoriloquy
- Pulmonary Edema
- Rhonchi
- Stridor
- Vesicular
- Wheeze

**Heart Conditions:**

- Aortic Regurgitation
- Atrial Septal Defect
- Holosystolic
- Midsystolic
- Mitral Stenosis
- Normal
- PDA
- Pulmonary Stenosis
- S3 Gallop
- S4 Gallop
- Systolic Click
- VSD

**Product Code:** LF00683U

**Category:** [General Training Aids](#)

**Brand:** Diversa

## Simulation/Models > Wound Treatment [View](#)

### Male Wound Care Assessment Set



Male Wound Care Assessment Set  
For use with Nursing Kelly. Shipping extra

**Product Code:** 300-01050

**Category:** [Wound Treatment](#)

**Brand:** Diversa

### Wound Care Assessment Set (Female)



Wound Care Assessment Set (Female) for Nursing Anne Abdominal Incision Module with Painted Sutures Abdominal Incision Module with Staples and Penrose Drain Abdominal Incision Module with Nylon Sutures and Penrose Drain Abdominal Subcutaneous Heparin and Insulin Injection Module Abdominal Packing Module Infected Colostomy Stoma Ventro-Gluteal and Gluteal Decubitus Ulcer Modules Below Knee Amputation Stump Thigh Packing and Irrigation Module Thigh Suture Module Thigh Debridement Module Varicose Vein Leg with Stasis Ulcer Diabetic Foot Module Shipping additional

**Product Code:** 325-00550  
**Category:** [Wound Treatment](#)  
**Brand:** Diversa

## Nasco Cleaner



Nasco Cleaner Use to remove stubborn stains from Life/form® simulators. 12-oz. bottle. Shipping Included.  
**Product Code:** LF09919U  
**Category:** [Wound Treatment](#)  
**Brand:** Diversa

## Bedsore Cleansing and Dressing Model



Bedsore Cleansing and Dressing Model Comes with an aluminum carrying case and draping sheet. 14-1/2" x 9-1/2" x 3-1/2". Shipping Included  
**Product Code:** SB14941U  
**Category:** [Wound Treatment](#)  
**Brand:** Diversa

### Basic Casualty Sim Kit



Basic Casualty Simulation Kit Contents: • 1 compound fracture tibia complete with reservoir and pump assembly • 1 Bottle coagulant makeup blood • 1 Pkg. powder to make 1 gal. simulated blood • 12 Assorted stick-on lacerations and open fracture wounds • 1 Casualty simulation wax • 1 Pkg. broken Plexiglas® for simulating glass embedded wound • 1 ea. grease paint colors: white, blue, brown and red • 1 Body adhesive for stick-on wounds • 1 Atomizer mist sprayer • 3 Spatulas • 3 Tongue depressors • 1 pkg. of methyl cellulose for blood thickening Size: 15" x 10" x 5". Shipping Included  
**Product Code:** SB30995U  
**Category:** [Wound Treatment](#)  
**Brand:** Diversa

### Decubitus Wound Care



Seymour II Wound Care Model Displays the following pressure ulcers: Stage I; Stage II; Stage III with undermining, tunneling, subcutaneous fat, and slough; Stage IV with exposed bones, undermining, tunneling, subcutaneous fat, eschar, and slough. Also shown are a suspected Deep Tissue Injury, unstageable full eschar/slough wound, and 5-1/2" dehisced wound. The Stage III and Stage IV are positioned so that a "bridging" dressing for use with a vacuum assisted closure and negative pressure wound therapy devices can be demonstrated and practiced. You are able to demonstrate and practice wound cleansing, classification, staging, and assessment, as well as the measurement of wound length, depth, undermining, and tunneling. The positioning of the wounds permits multiple dressings to be demonstrated at the same time. Model measures 12" x 13-1/2" x 6". Shipping Included

**Product Code:** SB46502U

**Category:** [Wound Treatment](#)

**Brand:** Diversa

## Wound Kit for GERi?/KERi?



Nursing Care Wound Kit for GERi™/KERi™ Nursing Manikins The kit comes with a spray container of odors including sweat and vomit. Comes with 13 wounds and makeup accessories, all packaged in a sturdy carrying case for ease of storage and transport. Moulages: • Adult stoma (1) • Ankle edemas (2) • Bed sore, 4th stage, 70 mm (1) • Burn, 2nd degree (1) • Child colostomy (1) • Diabetic ulcer, 20 mm (1) • Large road rash (1) • Skin graft, 6" (1) • Surgical site infections, 3 levels (3) • Ulcer, stage 1 (1) Makeup Accessories: • Adhesive removing wipes (12) • Coagulant blood (1) • Spirit gum with applicator (3) • Sweat spray (1) • Vomit spray (1) Shipping Included

**Product Code:** SB48077UG

**Category:** [Wound Treatment](#)

**Brand:** Diversa

## Life/form® Elderly Pressure Ulcer Foot Black



Chronic foot ulcers affect elderly the most, we have designed the Life/form® Elderly Pressure Ulcer Foot for instruction on care and cleaning of pressure ulcers in various stages. Pressure ulcers are more likely to appear over pressure points such as heels, tips of toes, between toes, or anywhere the bones may protrude and rub against socks, shoes, or bed sheets. This replica contains all four severity stages: • Stage 1 - Located on the bottom of the toe. Surface of the skin is red. • Stage 2 - Located on the bottom of the foot just under the toe. Surface of the skin is red and deeper into the skin layers. • Stage 3 - Located on the side of the foot. Surface of the skin is red, looks more like a crater, and reaches the bottom layer of the skin. • Stage 4 - Located on the heel of the foot. Surface of the skin is red. A great amount of tissue has been damaged, including muscle, bone, joints, and tendons. The Life/form® Elderly Pressure Ulcer Foot includes a foot and instruction key card. Measures 9-1/2" x 4". Three-year warranty.

**Product Code:** LF00944U

**Category:** [Wound Treatment](#)

**Brand:** Diversa

## [Simulation/Models > Male/Female Simulators](#) [View](#)

### [Male Cath. Simulator](#)



With the Life/form® Male Catheterization Simulator, catheterization can be practiced just as on a real patient. A lubricated catheter can be inserted in the urethral orifice, passed through the urethra, and into the bladder. When the bladder is successfully entered, artificial urine (water) will flow from the catheter. The student will feel the normal restrictions caused by the mucosal folds, bulbous urethra, and the internal urethral sphincter, just prior to entrance into the bladder. The experience teaches proper positioning and movement of the penis to allow the catheter to pass easily with a minimum of discomfort to the patient. Includes a hard carry case, lubricant, catheter, and teaching guide. Fluid supply stand not included. Shipping included

**Product Code:** LF00855U

**Category:** [Male/Female Simulators](#)

**Brand:** Diversa

## Female Cath. Simulator



Includes a hard carry case, lubricant, catheter, and teaching guide. Shipping included

**Product Code:** LF00856U

**Category:** [Male/Female Simulators](#)

**Brand:** Diversa

## Male/Female Cath. Sim. Set





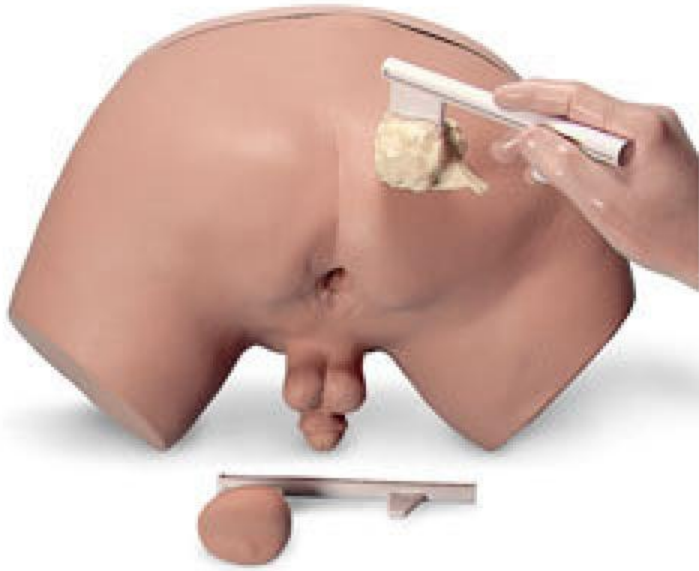
Male & Female Life/form®  
Catheterization Simulator Set Includes  
Female Catheterization Simulator  
(LF00856U) and Male Catheterization  
Simulator (LF00855U). Shipping  
included

**Product Code:** LF00857U

**Category:** [Male/Female Simulators](#)

**Brand:** Diversa

## Prostate Exam Simulator



The Prostate Examination Simulator is an indispensable model for both students and professionals. Instructors have the ability to teach techniques of prostate examination with no harm or embarrassment to real patients. Four separate prostate glands are supplied with the torso, representing one benign gland and three stages of prostatic carcinoma in varying degrees of development. Each gland can be inserted into the prostate torso to allow realistic practice in diagnosis by rectal palpation.

**STAGE A GLAND** - Benign, slightly enlarged, but otherwise normal prostate gland.

**STAGE B GLAND** - A discrete, hard nodule is palpable in the upper right quadrant. This simulates a beginning stage of carcinoma.

**STAGE C GLAND** - The spread of carcinoma is demonstrated in this gland. The small nodule has increased in size and has become an external hard mass on the surface of the gland.

**STAGE D GLAND** - This gland is totally replaced with carcinoma. The entire gland will feel hard and irregular.

Life/form® Prostate Examination Simulator is complete with four glands, hard carrying case, lubricant, and teaching guide. Size: 22" W x 15" D x 12" H. Three year warranty. Shipping included

**Product Code:** LF00901UG  
**Category:** [Male/Female Simulators](#)  
**Brand:** Diversa

**Advanced Breast Exam Sim.**



Life/form® Advanced Breast Exam Simulator Includes a rigid underbody, right and left breast inserts, overlay skin, three tumor sets (27 lumps), nine soft lumps to represent soft breast tissue, one hard lump to represent chestwall infiltration, baby powder, hard carrying case, and instruction manual. Torso size: 14" W x 11" H x 6" D. Three year warranty. Shipping Included

**Product Code:** LF00980UG

**Category:** [Male/Female Simulators](#)

**Brand:** Diversa

## Nasco Cleaner



Nasco Cleaner Use to remove stubborn stains from Life/form® simulators. 12-oz. bottle. Shipping Included.

**Product Code:** LF09919U

**Category:** [Male/Female Simulators](#)

**Brand:** Diversa

## Anatomical Breast



Anatomical Breast Includes carrying case, slipcover, and penlight. Shipping Included

**Product Code:** SB13139U

**Category:** [Male/Female Simulators](#)

**Brand:** Diversa

## Male and Female Cath Sim



Advanced Patient Care Male and Female Catheterization Simulator Features include: complete catheterization training; interchangeable, realistic male organ; fully functional stomas connected to removable, replaceable internal tanks; and modular urethral valve to prevent fluid leakage. Comes with an instruction manual and soft nylon carrying bag. Shipping included

**Product Code:** SB28919U

**Category:** [Male/Female Simulators](#)

**Brand:** Diversa

## Testicle Model



Testicle Model - 2 Lumps in 1  
Testicle Shipping included <h1 style="font-family: arial; padding-bottom: 10px;">

**Product Code:** SB41580U

**Category:** [Male/Female Simulators](#)

**Brand:** Diversa

## BSE Trainer



BSE Trainer This Breast Self Examination (BSE) Trainer is a flesh-based product for realistic practice. Within the breast resides five lumps representing different disease states: cysts (fluid related), fibroadenomas (calcifications), sclerosing adenosis, or fat necrosis. The filling is a water-based gel that emulates the natural consistency of a breast. The material is also very durable so that constant use in labs or teaching facilities won't wear it out or tear it. Three-year warranty. Shipping included

**Product Code:** SB43000G

**Category:** [Male/Female Simulators](#)

**Brand:** Diversa

## Breast Palpatation Trainer



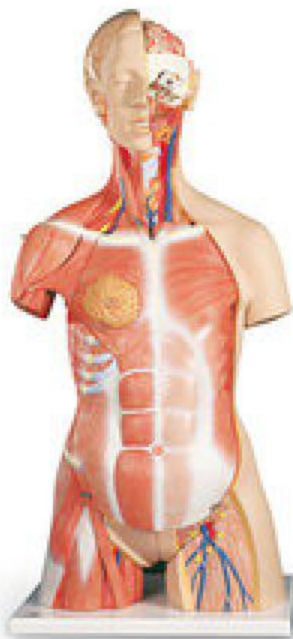
Advanced Patient Care Breast Palpation Trainer Seven interchangeable breasts demonstrate chronic mastitis, benign growth, carcinoma and the “skin orange” effect, giant sarcoma, scirrhous carcinoma, the lymphatic drainage system, and the movement of the mammary gland on the surface of the pectoralis major muscle for comprehensive training. The soft, vinyl trainer is mounted on a Lucite® stand. Includes instruction manual and a soft nylon carrying bag. Shipping Included

**Product Code:** SB43106U

**Category:** [Male/Female Simulators](#)

**Brand:** Diversa

## Dual-Sex Muscle Torso



Deluxe Dual-Sex Muscle Torso with Opened Neck and Back (31-Parts) The following parts can be removed:

- 7th thoracic vertebra
- 6-part head
- Breast covering with muscles
- Mammary gland
- M. gluteus maximus
- M. deltoideus
- 2 lungs
- 2-part heart
- 2-part stomach
- Liver with gall bladder
- 4-part intestine system
- Front kidney half
- 4-part male genital insert
- 3-part female genital insert with embryo

Comes with 3B Torso-Teaching-Guide 34-1/4" x 15" x 9-7/8". Shipping Included

**Product Code:** SB41423U

**Category:** [Male/Female Simulators](#)

**Brand:** Diversa

## Simulation/Models > Pediatric/Neonatal Simulators [View](#)

### [SimPad System](#)



The SimPad™ System includes:

- SimPad:** Operator's remote control simulator
- Link Box:** Connects to and controls the patient simulator
- Lithium-ion battery:** Battery power for Link Box
- AC Adapter:** Power and charger for SimPad and Link Box
- Manikin adapter cable:** Connects Link Box to patient simulator
- Manikin Strap:** Attaches Link Box and battery to patient simulator
- USB Cable:** Attaches SimPad to PC for updates and downloads
- SimPad Wrist Strap**
- SimPad Sleeve:** Protective case for SimPad

Shipping is additional  
**Product Code:** 200-30001  
**Category:** [Pediatric/Neonatal Simulators](#)  
**Brand:** Diversa

### Nursing Kid (SimPad Capable)



Includes: Full-body manikin (VitalSim capable), Airway Lubricant, Simulated Blood, Hospital Gown, Carry Case, and Directions for Use. VitalSim™ Unit is required for operation. Sold separately  
 Shipping additional  
**Product Code:** 350-05050  
**Category:** [Pediatric/Neonatal Simulators](#)  
**Brand:** Diversa

### Nursing Baby (SimPad Capable)



Includes: Infant Manikin (SimPad Capable), 3 Simulated Rectal Suppositories, Airway Lubricant, Baby Pants, Simulated Blood, Carry Case and Directions for Use\*\* SimPad Unit required for operation. Sold separately  
\*\*Shipping additional

**Product Code:** 365-05050

**Category:** [Pediatric/Neonatal Simulators](#)

**Brand:** Diversa

## Pediatric IV & Inj Arm



Includes a Life/form® Arm with white skin, fluid supply bag, 3 cc syringe, one pint Life/form® blood, teaching guide, and hard carry case. Fluid supply stand not included. Three year warranty. Shipping included

**Product Code:** LF00958UG

**Category:** [Pediatric/Neonatal Simulators](#)

**Brand:** Diversa

## Birthing Station Sim





Life/form® Birthing Station Simulator  
The Life/form® Birthing Station Simulator includes teaching guide and hard carry case. Size: 23" x 14" x 7". Three year warranty. Shipping included

**Product Code:** LF01070UG

**Category:** [Pediatric/Neonatal Simulators](#)

**Brand:** Diversa

### Micro-Premie Simulator



Life/form® Micro-Premie Simulator  
Includes diaper, hat, lubricant, 3 cc syringe, 25 G. butterfly needle and blood powder. Hat color may vary. NG tube size 5 FR. ET tube size 5 mm ID. Simulator dimensions: 12" long, 4" deep, and 18-1/2" across from hand to hand. Three year warranty. Shipping Included

**Product Code:** LF01206UG

**Category:** [Pediatric/Neonatal Simulators](#)

**Brand:** Diversa

### Child CRiSis? Manikin



Life/form® Complete Child CRiSis™ Manikin  
The Child CRiSis™ Manikin is 46-3/4" long and weighs 20 lbs. Interactive ECG simulator not included (see LF03670U). Three year warranty. Shipping Included  
**Product Code:** LF03616UG  
**Category:** [Pediatric/Neonatal Simulators](#)  
**Brand:** Diversa

### Deluxe Child CRiSis? w/ ECG Sim



Life/form® Deluxe Child CRiSis™ Manikin with ECG Simulator  
The Life/form® Deluxe Child CRiSis™ Manikin features the same quality components as the Complete Child CRiSis™ Manikin (LF03616U) with the addition of an Interactive ECG Arrhythmia Simulator. Three year warranty. Shipping Included  
**Product Code:** LF03617UG  
**Category:** [Pediatric/Neonatal Simulators](#)  
**Brand:** Diversa

### Infant Airway Mgmt. Head



Life/form® Infant Airway Management Trainer Head  
Three year warranty. Comes with a pump spray lubricant. Shipping Included  
**Product Code:** LF03621UG  
**Category:** [Pediatric/Neonatal Simulators](#)  
**Brand:** Diversa

### **Infant Airway Mgmt w/ Stand**



Life/form® Infant Airway Management Trainer with Stand  
Includes training stand to mount head, pump spray lubricant, and hard carrying case. Three year warranty. Shipping Included  
**Product Code:** LF03623UG  
**Category:** [Pediatric/Neonatal Simulators](#)  
**Brand:** Diversa

### **Int. Infant CRiSis? Manikin**



Intermediate Life/form® Infant CRiSis™ Manikin Includes artificial blood, IV bags, umbilical cord, carry case, spray pump lubricant, and instructional manual. Three year warranty Shipping Included  
**Product Code:** LF03700UG  
**Category:** [Pediatric/Neonatal Simulators](#)  
**Brand:** Diversa

### Complete Infant CRiSis? Manikin



Life/form® Complete Infant CRiSis™ Manikin Includes a hard carrying/storage case. Three year warranty. Shipping Included  
**Product Code:** LF03709UG  
**Category:** [Pediatric/Neonatal Simulators](#)  
**Brand:** Diversa

### Deluxe Complete Infant Manikin



Life/form® Deluxe Complete Infant CRiSis™ Manikin with Interactive ECG Simulators Includes Interactive ECG Simulator and a hard carrying/storage case. Three year warranty. Shipping Included  
**Product Code:** LF03718UG  
**Category:** [Pediatric/Neonatal Simulators](#)  
**Brand:** Diversa

### Baby Buddy? CPR Manikin



Life/form® Baby Buddy™ Single CPR Manikin Consists of one infant manikin, size: 20" x 14" x 7", 10 lung/mouth protection bags, one insertion tool, and an instruction manual. Shipping Included  
**Product Code:** LF03720  
**Category:** [Pediatric/Neonatal Simulators](#)  
**Brand:** Diversa

### Baby Buddy? CPR 5-Pack



Life/form® Baby Buddy™ CPR Manikin 5-Pack Consists of five infant manikins, 50 lung/mouth protection bags, carrying bag, five lung insertion tools, and an instruction manual. Shipping Included  
**Product Code:** LF03721  
**Category:** [Pediatric/Neonatal Simulators](#)  
**Brand:** Diversa

### Baby Buddy? Manikin Bags



Baby Buddy™ CPR Manikin Lung/Mouth Protection Bags Package of 100. Shipping Included  
**Product Code:** LF03723  
**Category:** [Pediatric/Neonatal Simulators](#)  
**Brand:** Diversa

### Nursing Baby Non-Sim?



Nursing Baby Non-VitalSim™ Capable• Articulating IV arm and IV leg allows for practice of IV cannulation, medication administration, and site care and maintenance• Bilateral deltoid and bilateral thigh intramuscular injections possible• Gastronomy tube opening for care and feeding• Head with anatomical landmarks, trachea and esophagus, along with simulated lungs and stomach for the practice of many procedures, including NG, OG, tracheal care, and suctioning• Interchangeable genitalia allows for urinary catheterization with fluid return, rectal temperature simulation, and administration of suppositories• Medication and fluid administration through intraosseous infusion allowed via tibia access with landmarks at the tibial tuberosity and medial malleolus. Shipping Included  
**Product Code:** LG2057U  
**Category:** [Pediatric/Neonatal Simulators](#)  
**Brand:** Diversa

### Advanced Childbirth Simulator



Advanced Childbirth Simulator Includes two fetal babies with umbilical cords and placentas, spare stomach cover, two vulva inserts, four spare umbilical cords, two umbilical clamps, talcum powder, instruction manual, and soft carrying bag. Shipping included  
**Product Code:** SB22438U  
**Category:** [Pediatric/Neonatal Simulators](#)  
**Brand:** Diversa

### Obstetrical Manikin



Obstetrical Manikin - White  
A soft carry bag is included. Size: 21" x 13" x 17".  
Shipping included  
**Product Code:** SB23536U  
**Category:** [Pediatric/Neonatal Simulators](#)  
**Brand:** Diversa

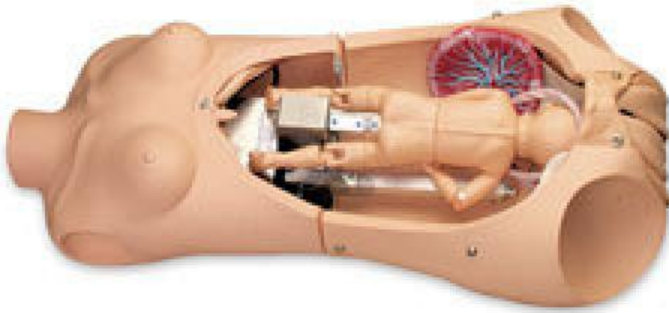
### Maternal/Neonate Birth Sim



NOELLE™ Maternal and Neonatal Birthing Simulator with PEDI® Blue Neonate  
The manikin comes with four umbilical cords, four dilating cervices, two umbilical clamps, three vulva for postpartum suturing, neonatal monitor, international power supply (100-240V AC), connecting cables, talcum powder, water-soluble silicone lubricant, instruction manual, and carrying bag.  
Shipping Included  
**Product Code:** SB37713U  
**Category:** [Pediatric/Neonatal Simulators](#)  
**Brand:** Diversa

### NOELLE? Birthing Torso





NOELLE® Birthing Torso  
The torso comes with four umbilical cords, four dilating cervixes, two umbilical clamps, three vulva for postpartum suturing, talcum powder and water soluble silicone lubricant, instruction manual, and soft nylon carrying bag. Shipping included

**Product Code:** SB37714UG

**Category:** [Pediatric/Neonatal Simulators](#)

**Brand:** Diversa

### Total Childbirth Ed Station



Total Childbirth Education Station  
Includes the Advanced Childbirth Simulator (SB22438U), the Birthing System Module (SB32872U), the Palpation Module for Leopold's Maneuvers (SB29930U), and the Labor Delivery Module (SB29931U). Shipping Included

**Product Code:** SB38758UG

**Category:** [Pediatric/Neonatal Simulators](#)

**Brand:** Diversa

### Simulaids STAT Baby



Simulaids STAT BabyThe Stat Baby is supplied with accessories that include IV vein kit (one arm and one leg), leg skin, arm skin, 12 IO leg bones, four pneumothorax sites, two injection sites, one PICC line site, four reservoir bags, defibrillator adapters, interactive ECG simulator, simulated blood powder, and carry bag. Three-year warranty. Shipping Included  
**Product Code:** SB41171UG  
**Category:** [Pediatric/Neonatal Simulators](#)  
**Brand:** Diversa

### [Maternal/Neonatal Birth Sim](#)



NOELLE® Maternal and Neonatal Birthing Simulator Full-term, intubatable newborn with pulses and cyanosis. Comes with a 23" touchscreen monitor that communicates wirelessly to laptop with Micro recording and debriefing system. Displays up to eight values including HR, ABP, RR, CO2, SpO2, temperature, NIBP, and time. Real time capture of video, audio, log file, and patient monitor feeds. Enables high-quality post simulation debriefing.

Newborn with Cyanosis and Pulses:

- Chest compressions and ventilations are measured and logged
- Full term intubatable newborn with cyanosis and umbilical pulse
- Realistic heart and lung sounds
- Realistic crying

NOELLE® Simulator Features:

- Bilateral radial pulses
- Birthing fetus with placentas and umbilical cords
- Force, torque and fetal shoulder position measured and graphed in real time
- Intubatable airway with chest rise
- IV arms for meds/fluids
- Maternal speech
- Precision delivery system
- Programmable eclampsia with seizures
- Programmable postpartum hemorrhage
- Removable stomach cover

Shipping Included

**Product Code:** SB48757U

**Category:** [Pediatric/Neonatal Simulators](#)

**Brand:** Diversa

## NOELLE Maternal & Neonatal Birthing Simulator



**Product Code:** 2785  
**Category:** [Pediatric/Neonatal Simulators](#)  
**Brand:** Diversa

### [Newborn Baby Doll, Males & Females, Asian, White, Brown--Asian M](#)



Newborn Baby Doll, Males & Females, Asian, White, BrownThese lifelike babies are only one day old, their eyes are just slightly open, their umbilical cords are still visible, and they have a “soft spot” on their carefully sculpted heads. Soft vinyl bodies with jointed arms and legs. Surface washable and posable. Each doll is anatomically correct for complete realism. Baby dolls arrive with diapers. 21" long. Fabric imported.Includes Freight  
**Product Code:** SB26943U  
**Category:** [Pediatric/Neonatal Simulators](#)  
**Brand:** Diversa

### [Newborn Baby Doll, Males & Females, Asian, White, Brown--Asian M - Newborn Baby Doll Asian Female](#)



**Product Code:** SB26944U  
**Category:** [Pediatric/Neonatal Simulators](#)  
**Brand:** Diversa

**Newborn Baby Doll, Males & Females, Asian, White, Brown--Asian M - Newborn Baby Doll White Female**



**Product Code:** SB17157U  
**Category:** [Pediatric/Neonatal Simulators](#)  
**Brand:** Diversa

**Newborn Baby Doll, Males & Females, Asian, White, Brown--Asian M - Newborn Baby Doll White Male**



**Product Code:** SB17156U  
**Category:** [Pediatric/Neonatal Simulators](#)  
**Brand:** Diversa

**Newborn Baby Doll, Males & Females, Asian, White, Brown--Asian M - Newborn Baby Doll Brown Female**



**Product Code:** SB17159U  
**Category:** [Pediatric/Neonatal Simulators](#)  
**Brand:** Diversa

**Newborn Baby Doll, Males & Females, Asian, White, Brown--Asian M - Newborn Baby Doll Brown Male**



**Product Code:** SB17158U  
**Category:** [Pediatric/Neonatal Simulators](#)  
**Brand:** Diversa

## Maternal Birthing Sim



NOELLE® Maternal Birthing Simulator Features articulating full-body female manikin, intubatable airway with chest rise, IV arm for meds/fluids, removable stomach cover, practice C-section and forceps delivery, practice Leopold maneuvers, multiple fetal heart sounds, automatic birthing system, measure head descent and cervical dilation, multiple placenta locations, replaceable dilating cervixes, practice postpartum suturing on three vulval inserts, and one articulating birthing baby with placenta. The manikin comes with two umbilical cords, two dilating cervixes, two umbilical clamps, two vulva inserts, three vulva for postpartum suturing, neonatal monitor, international power supply (100-240V AC), connecting cables, talcum powder, water-soluble silicone lubricant, and carry bag. Shipping Included  
**Product Code:** SB48760U  
**Category:** [Pediatric/Neonatal Simulators](#)  
**Brand:** Diversa

**Simulation/Models > Venipuncture/Injection Simulators** [View](#)

[Arterial Arm Stick \(Arm Only\)](#)



Infusible arteries designed for training the proper arterial puncture procedure for blood gas analysis Shipping additional

**Product Code:** 375-81001

**Category:** [Venipuncture/Injection Simulators](#)

**Brand:** Diversa

## Intramuscular Injection Sites Poster



This visual aid was developed specifically for teaching, demonstrating, training, and studying of intramuscular injection site locations. The poster illustrates side landmarks and muscles in the deltoid, dorsogluteal, ventrogluteal, and vastus lateralis regions. The 18" x 24" poster is laminated and perfect for mounting in a classroom or skills lab. This teaching aid will enhance intramuscular injection skills teaching and training. Shipping included

**Product Code:** LF00695U

**Category:** [Venipuncture/Injection Simulators](#)

**Brand:** Diversa

## Adult Venipuncture/INJ Arm





• Life/form® Realism • Realistic Flashback • Replaceable Skins • Intramuscular Injection Site • Complete with Fingerprints • Simple and easy to use, Life/form® Venipuncture and Injection Training Arms are the ideal way to teach venipuncture and injection techniques including starting IVs and introducing Over the Needle IV catheters. This simulator ends your problem of finding willing volunteers, and helps to avoid patient injury and liability while the students are learning new procedures. Realism begins with fine detail - right down to the fingerprints. But most important is the realistic feeling of puncture through the vinyl skin and latex veins. The skin actually rolls as you palpate the vein and the characteristic “pop” can be felt as the needle penetrates the vein. Veins are accessible at the antecubital fossa, along the forearm, and at the back of the hand, making it possible to practice venipuncture at any of the common sites. Practice of intramuscular injection is equally realistic. A foam pad simulates muscle tissue, and the boundaries are identified by natural bonelike landmarks. Life/form® Venipuncture and Injection Arms are designed with replaceable skins and veins. Complete replacement skin kits are available and easy to use. To extend the life of each skin/vein set, an aerosol sealant is available to seal punctures in the tubing and prevent leakage. Includes a Life/form® arm with skin, 22 gauge needle, butterfly set, infusion set, 3 cc syringe, 12 cc syringe, one pint Life/form® blood, fluid supply bags, instruction manual, and hard carry case. Fluid supply stand not included. Three-year warranty. Size: 35" x 12" x 6". CAUTION: Use only Life/form® Replacements. Do not use Conventional Latex Tubing. This will cause malfunction of the simulator. Shipping included

**Product Code:** LF00698UG

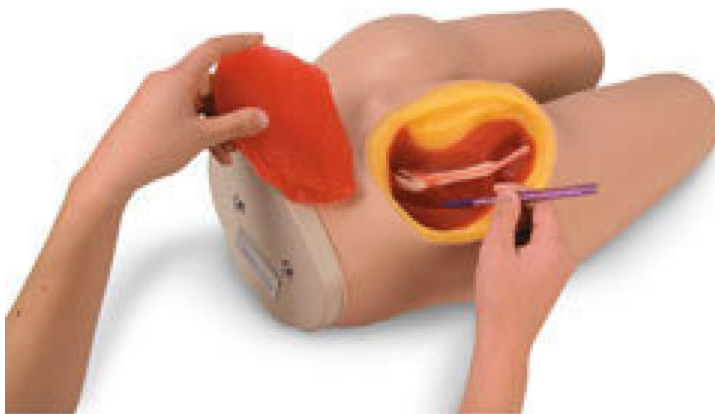
**Category:** [Venipuncture/Injection Simulators](#)

**Brand:** Diversa



Includes a Life/form® Arm with white skin, fluid supply bag, 3 cc syringe, one pint Life/form® blood, teaching guide, and hard carry case. Fluid supply stand not included. Three year warranty. Shipping included  
**Product Code:** LF00958UG  
**Category:** [Venipuncture/Injection Simulators](#)  
**Brand:** Diversa

### Intramuscular Inj Sim



Life/form® Intramuscular Injection Simulator Comes complete with teaching guide, supply of syringes, and hard carrying case. Carton size: 22" x 16" x 10". Shipping included  
**Product Code:** LF00961U  
**Category:** [Venipuncture/Injection Simulators](#)  
**Brand:** Diversa

### Venip./Inj Arm Replace Kit



Life/form® Venipuncture and Injection Training Arm: Skin and Vein Replacement Kit - White for Training Arm LF00698U Shipping Included  
**Product Code:** LF00966U  
**Category:** [Venipuncture/Injection Simulators](#)  
**Brand:** Diversa

### Veni/Inj Arm-Black



Life/form® Adult Venipuncture and Injection Training Arm - Black Includes a Life/form® arm with skin, blood donor set, infusion set, 3 cc syringe, 12 cc syringe, needle, one pint Life/form® blood, teaching guide, and hard carrying case. Size: 35" x 12" x 6". Shipping Included  
**Product Code:** LF00997U  
**Category:** [Venipuncture/Injection Simulators](#)  
**Brand:** Diversa

### Fluid Supply Stand



Fluid Supply StandStand for  
Life/form® Fluid Supply Bag  
(LF01130U). 28" high with 5" x 8"  
base, 5/16" steel hooked rod.Shipping  
Included  
**Product Code:** LF01022U  
**Category:** [Venipuncture/Injection  
Simulators](#)  
**Brand:** Diversa

### Adv Venip/Inj Arm - White



Life/form® Advanced Venipuncture  
and Injection Arm - WhiteShipping  
Included  
**Product Code:** LF01121U  
**Category:** [Venipuncture/Injection  
Simulators](#)  
**Brand:** Diversa

### Adv Venip/Inj Arm - Black



Life/form® Advanced Venipuncture and Injection Arm - BlackShipping Included  
**Product Code:** LF01126U  
**Category:** [Venipuncture/Injection Simulators](#)  
**Brand:** Diversa

### Venip/Inj Demo Arm - White



Life/form® Venipuncture and Injection Demonstration Arm - White Shipping Included  
**Product Code:** LF01131U  
**Category:** [Venipuncture/Injection Simulators](#)  
**Brand:** Diversa

### Venip/Inj Demo Arm - Black



Life/form® Venipuncture and Injection  
Demonstration Arm - BlackShipping  
Included  
**Product Code:** LF01132U  
**Category:** [Venipuncture/Injection  
Simulators](#)  
**Brand:** Diversa

### Advanced IV Hand



Life/form® Advanced IV Hand  
Includes one pint simulated blood, 2 IV  
bags, butterfly set, 3 cc syringe, 12 cc  
syringe, and 22 gauge needle. Fluid  
supply stand not included. Three year  
warranty. Shipping Included  
**Product Code:** LF01139UG  
**Category:** [Venipuncture/Injection  
Simulators](#)  
**Brand:** Diversa

### Venatech IM & SubQ Simulator



Life/form® Venatech IM & SubQ Simulator The device fits on the area of the deltoid muscle as well as the vastus lateralis, rectus femoris, ventrogluteal, and dorsogluteal areas for realism. Pad measures 6-3/4" x 3-1/4" x 1-1/2".

Three year warranty. Shipping Included

**Product Code:** LF01184UG

**Category:** [Venipuncture/Injection Simulators](#)

**Brand:** Diversa

## Venous Cannulation Sim



Life/form® Central Venous Cannulation Simulator Includes fluid supply bags, replaceable skin, needles, one quart of Life/form® blood, and instruction guide in a hard carry case. Fluid supply stand not included. Size: 20" x 17" x 10".

Three year warranty. Shipping included

**Product Code:** LF01087UG

**Category:** [Venipuncture/Injection Simulators](#)

**Brand:** Diversa

## Nasco Cleaner



Nasco Cleaner Use to remove stubborn stains from Life/form® simulators. 12-oz. bottle. Shipping Included.

**Product Code:** LF09919U

**Category:** [Venipuncture/Injection Simulators](#)

**Brand:** Diversa

## Chester Chest?



Chester Chest™ Complete unit includes life-size torso with advanced detachable right arm, real chest port, chest tissue flap, three Difficult Accessing Inserts, 9.6 FPR tunneled central catheter, 5 FR dual PICC, IV catheter, recessed area for attachment of optional peripheral port, “blood” reservoir bags, and user’s information guide. Carrying case is not included. Implanted port included.

Measures 20-1/2" x 15-1/2" x 5-1/4". Shipping included

**Product Code:** SB18636UG

**Category:** [Venipuncture/Injection Simulators](#)

**Brand:** Diversa

## Venous Training Arm





**Venous Training Arm** Features simulated cephalic, basilic, antecubital, radial and ulnar veins, subcutaneous injection area on volar and lateral sides of forearm, intramuscular injection capability in the deltoid area, dorsum of the hand has two veins for additional intravenous line set-ups. Comes with set-up kit consisting of blood powder concentrate, pressure bulb, blood dispensing bag, and spare arm skin. Includes Lucite® base with stand and carrying case. Shipping Included  
**Product Code:** SB23444U  
**Category:** [Venipuncture/Injection Simulators](#)  
**Brand:** Diversa

### Injection Teaching Model



**Injection Teaching Model** 6" x 4-3/4" x 1-3/4" Shipping Included  
**Product Code:** S23496U  
**Category:** [Venipuncture/Injection Simulators](#)  
**Brand:** Diversa

### IV Lower Arm w/ Hand



IV Lower Arm and Hand for Patient Care Manikins Forearm and hand, veined with flexible tubing, allows practice of IV placement, injection of fluids, and drawing of blood. Comes with reservoir bags, carrying tray, and simulated blood powder. (Procedure needle not included.) Shipping included

**Product Code:** SB23533U

**Category:** [Venipuncture/Injection Simulators](#)

**Brand:** Diversa

### Arterial/Venous Training Arm



Arterial/Venous Training Arm Arterial/Venous Training Arm that provides both venous and arterial vascular access. An arterial pulse is generated at the radial and brachial locations through a peristaltic pump, providing truly realistic arterial stick and AV anastomosis/hemodialysis exercises. Shipping Included

**Product Code:** SB26040UG

**Category:** [Venipuncture/Injection Simulators](#)

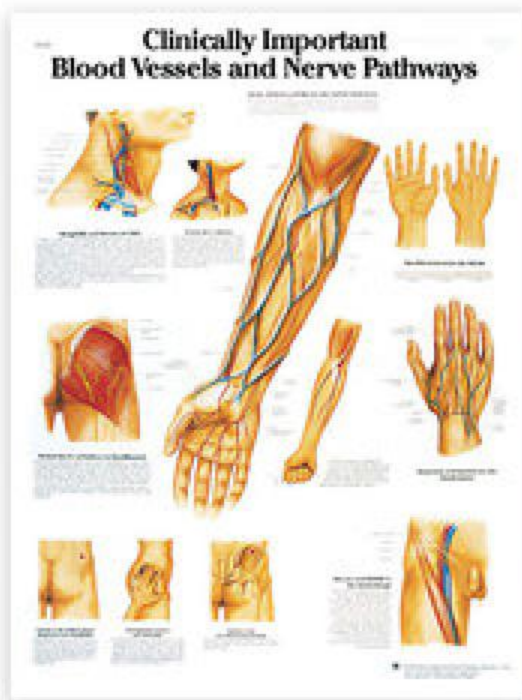
**Brand:** Diversa

### IV Training Arm/Hand Set



IV Training Arm and Hand Set w/ veins, Carry tray & Blood, 3 yr warranty Shipping Included  
**Product Code:** SB32220U  
**Category:** [Venipuncture/Injection Simulators](#)  
**Brand:** Diversa

### Chart for Blood Vessels/Nerves



Laminated 3B Scientific® Anatomical Chart for Clinically Important Blood Vessels and Nerve Pathways Shipping Included  
 <h1 3b="" anatomical="" and="" blood="" bottom="" care="" chart="" clean="" clinically="" convenient="" display="" easy="" enable="" font-family="" for="" glossy="" h1="" important="" laminated="" lamination="" metal="" mounted="" nerve="" of="" on="" paper="" poster="" premium="" printed="" rods="" shipping="" size="" span="" style="" color="" to="" top="" ultra-thin="" vessels="" wipe="" with="" x="">  
**Product Code:** SB41520U  
**Category:** [Venipuncture/Injection Simulators](#)  
**Brand:** Diversa

### Blood Reservoir Bag



Blood Reservoir Bag Permits the practice of “blood” withdrawal and fluid infusion. For use with Chester Chest™ (SB18636U). Shipping Included

**Product Code:** SB46515UG

**Category:** [Venipuncture/Injection Simulators](#)

**Brand:** Diversa

### Diabetic Injection Pad



Life/form® Diabetic Injection Pad Pad is thick enough to accept all insulin needles. For safety purposes, the 6-1/4" L x 4-1/4" W x 3/4" D oval pad has a hard plastic backing to prevent the needle from poking through the pad and into the wearer's skin. Has a 1" wide nylon strap with an adjustable plastic buckle. Shipping included

**Product Code:** WA18238U

**Category:** [Venipuncture/Injection Simulators](#)

**Brand:** Diversa

**Life/form® Portable IV Arm Trainer White - Life/form® Portable IV Arm Trainer - Black**



Life/form® Portable IV Arm Trainer -  
Black

**Product Code:** LF00704U-3

**Category:** [Venipuncture/Injection  
Simulators](#)

**Brand:** Diversa

**Portable IV Arm Available in White & Black---White Arm - Portable IV Arm Black Arm**



**Product Code:** LF00704U-2

**Category:** [Venipuncture/Injection  
Simulators](#)

**Brand:** Diversa

**Chester Chest? Adv Arm**



Chester Chest™ Advanced  
Arm Shipping Included <h1  
style="\"&quot;color:\" #003366;=\"\"  
font-family:=\"\" arial;=\"\" padding-  
bottom:10px;\"=\"\">

**Product Code:** SB45082U

**Category:** [Venipuncture/Injection  
Simulators](#)

**Brand:** Diversa

**Life/form® Portable IV Arm Trainer White**



The economical Life/form® Portable IV Training Arm combines realism, fine detail, and lightweight convenience in a single trainer. This self-contained trainer is packaged in a plastic case that can be converted into a work station. Trainer includes everything you will need to begin training and practicing IV skills. The Life/form® Portable IV Training Arm Trainer is constructed of soft material with life-like veins in the skin surface that are visible and palpable. Veins are accessible at the antecubital fossa and along the forearm, making it possible to practice venipuncture at any of the common sites. When puncturing through the vinyl skin and veins, the skin will actually roll as you palpate the veins and the characteristic “pop” can be felt as the needle penetrates the vein. This trainer is the ideal way to teach venipuncture techniques including starting IVs and introducing Over the Needle IV catheters, and a realistic flashback will be observed when the needle has been accurately inserted into the vein. This trainer is inexpensive enough so that each student can have their own arm to practice technique and skills required in their courses. Under normal use, hundreds of injections may be performed. The skins and veins cannot be changed (trainer will eventually need to be replaced). Included with each trainer is two IV bags, packet of blood powder and spoon, plastic fluid supply supply stand, two pinch clamps, 3 cc syringe, 12 cc syringe, 12 gauge needle, a winged infusion set, and a plastic clamshell storage case.

**Product Code:** LF00701U

**Category:** [Venipuncture/Injection Simulators](#)

**Brand:** Diversa

**Portable IV Arm Available in White & Black---White Arm**



Portable IV Arm Available in White & Black---White Arm  
The economical Life/form® Portable IV Training Arm combines realism, fine detail, and lightweight convenience in a single trainer. This self-contained trainer is packaged in a plastic case that can be converted into a work station. Trainer includes everything you will need to begin training and practicing IV skills. The Life/form® Portable IV Training Arm Trainer is constructed of soft material with life-like veins in the skin surface that are visible and palpable. Veins are accessible at the antecubital fossa and along the forearm, making it possible to practice venipuncture at any of the common sites. When puncturing through the vinyl skin and veins, the skin will actually roll as you palpate the veins and the characteristic “pop” can be felt as the needle penetrates the vein. This trainer is the ideal way to teach venipuncture techniques including starting IVs and introducing Over the Needle IV catheters, and a realistic flashback will be observed when the needle has been accurately inserted into the vein. This trainer is inexpensive enough so that each student can have their own arm to practice technique and skills required in their courses. Under normal use, hundreds of injections may be performed. The skins and veins cannot be changed (trainer will eventually need to be replaced). Included with each trainer is two IV bags, packet of blood powder and spoon, plastic fluid supply supply stand, two pinch clamps, 3 cc syringe, 12 cc syringe, 12 gauge needle, a winged infusion set, and a plastic clamshell storage case. Price Includes Freight!

**Product Code:** LF00701U-2

**Category:** [Venipuncture/Injection Simulators](#)

**Brand:** Diversa

[Simulation/Models > Full Body Manikins](#) [View](#)

[SimPad System](#)





The SimPad™ System includes:

- SimPad:** Operator's remote control
- Link Box:** Connects to and controls the patient simulator
- Lithium-ion battery:** Battery power for Link Box
- AC Adapter:** Power and charger for SimPad and Link Box
- Manikin adapter cable:** Connects Link Box to patient simulators
- Manikin Strap:** Attaches Link Box and battery to patient simulator
- USB Cable:** Attaches SimPad to PC for updates and downloads
- SimPad Wrist Strap**
- SimPad Sleeve:** Protective case for SimPad

Shipping is additional

**Product Code:** 200-30001

**Category:** Full Body Manikins

**Brand:** Diversa

## Patient Kelly Manikin



Patient Kelly is a manikin designed for scenario-based training of the care and management of a wide variety of in-hospital patients. Product benefits: Educationally effective for training core in-hospital skills, targeting specific skills of hospital care providers. Scenarios available from the SimStore™ library provide standardized training while customizable scenarios and real-time instructor control allows adaptation to meet individual students needs. Economical and educationally efficient skills and scenario based trainer develops critical thinking by allowing students to perform assessments and interventions. Durable, rugged and lifelike; made to withstand years of use. Flexible manikin platform which allows multiple accessory modules to be added including trauma, Nuclear, Biological and Chemical (NBC) Module and bleeding control in multiple clinical settings. Product features: Head with anatomical landmarks, trachea and esophagus, and simulated lungs and stomach, allow the practice of many procedures, including NG, OG, tracheal care and suctioning. Students can auscultate normal and abnormal heart, breath and bowel sounds using a standard stethoscope. (SimPad version) Instructor-controlled blood pressure arm allows for realistic palpation and auscultation. Systolic and diastolic pressures, auscultatory gap, and volume are variable (SimPad version) IV cannulation, medication administration, site care and maintenance are allowed in the antecubital area and the dorsum of the hand, accessing the median, basilic, and cephalic veins. Ability to practice medication dose calculations and administration through intramuscular injections at the deltoid, gluteal, ventrogluteal, and thigh sites. Realistic male and female urinary catheterization and enema procedures may be performed with fluid return. Wound modules can be added to create realistic scenarios for wound assessment and care. Shipping is additional.

**Product Code:** 300-00001

**Category:** Full Body Manikins

**Brand:** Diversa



Includes: Adult Manikin (SimPad capable), Hospital Gown, Airway Lubricant, Assembly Tool Kit and Directions for use.\*\* SimPad Unit required for operation. Sold separately  
\*\*Shipping additional

**Product Code:** 300-05050

**Category:** [Full Body Manikins](#)

**Brand:** Diversa

### **Nursing Anne (SimPad Capable)**



Includes: Adult Manikin (SimPad capable), Hospital Gown, Airway Lubricant, Assembly Tool Kit and Directions for Use.\*\* SimPad Unit required for operation. Sold separately  
\*\*Shipping additional

**Product Code:** 325-05050

**Category:** [Full Body Manikins](#)

**Brand:** Diversa

### **Nursing Kid (SimPad Capable)**



Includes: Full-body manikin (VitalSim capable), Airway Lubricant, Simulated Blood, Hospital Gown, Carry Case, and Directions for Use.VitalSim™ Unit is required for operation. Sold separatelyShipping additional

**Product Code:** 350-05050

**Category:** [Full Body Manikins](#)

**Brand:** Diversa

### **Nursing Baby (SimPad Capable)**



Includes: Infant Manikin (SimPad Capable), 3 Simulated Rectal Suppositories, Airway Lubricant, Baby Pants, Simulated Blood, Carry Case and Directions for Use\*\* SimPad Unit required for operation. Sold separately \*\*Shipping additional

**Product Code:** 365-05050

**Category:** [Full Body Manikins](#)

**Brand:** Diversa

### Child CRiSis? Manikin



Life/form® Complete Child CRiSis™ Manikin The Child CRiSis™ Manikin is 46-3/4" long and weighs 20 lbs. Interactive ECG simulator not included (see LF03670U). Three year warranty. Shipping Included

**Product Code:** LF03616UG

**Category:** [Full Body Manikins](#)

**Brand:** Diversa

### Deluxe Child CRiSis? w/ ECG Sim



Life/form® Deluxe Child CRiSis™ Manikin with ECG Simulator  
The Life/form® Deluxe Child CRiSis™ Manikin features the same quality components as the Complete Child CRiSis™ Manikin (LF03616U) with the addition of an Interactive ECG Arrhythmia Simulator. Three year warranty. Shipping Included  
**Product Code:** LF03617UG  
**Category:** [Full Body Manikins](#)  
**Brand:** Diversa

### Deluxe Complete Infant Manikin



Life/form® Deluxe Complete Infant CRiSis™ Manikin with Interactive ECG Simulator  
Includes Interactive ECG Simulator and a hard carrying/storage case. Three year warranty. Shipping Included  
**Product Code:** LF03718UG  
**Category:** [Full Body Manikins](#)  
**Brand:** Diversa

### Baby Buddy? CPR Manikin



Life/form® Baby Buddy™ Single CPR Manikin Consists of one infant manikin, size: 20" x 14" x 7", 10 lung/mouth protection bags, one insertion tool, and an instruction manual. Shipping Included  
**Product Code:** LF03720  
**Category:** [Full Body Manikins](#)  
**Brand:** Diversa

### Baby Buddy? CPR 5-Pack



Life/form® Baby Buddy™ CPR Manikin 5-Pack Consists of five infant manikins, 50 lung/mouth protection bags, carrying bag, five lung insertion tools, and an instruction manual. Shipping Included  
**Product Code:** LF03721  
**Category:** [Full Body Manikins](#)  
**Brand:** Diversa

### Baby Buddy? Manikin Bags



Baby Buddy™ CPR Manikin  
Lung/Mouth Protection Bags Package of  
100. Shipping Included  
**Product Code:** LF03723  
**Category:** [Full Body Manikins](#)  
**Brand:** Diversa

### Life/form® Chest Tube Manikin



Life/form® Chest Tube Manikin Includes  
two visual sites for chest tube  
maintenance, five replaceable surgical  
chest tube sites, five replaceable  
pneumothorax chest pads, and hard carry  
case. (Chest tubes or water-seal drainage  
system not included). Shipping included  
**Product Code:** LF03770U  
**Category:** [Full Body Manikins](#)  
**Brand:** Diversa

### Complete CRiSis® Manikin



Life/form® Complete CRiSis™ Manikin with Advanced Airway Management Includes a full CPR Manikin, Advanced “Airway Larry” Airway Management Trainer Head, IV Arm, Blood Pressure Arm, and Defibrillation Chest Skin. Great trainer for introductory as well as advanced training for ACLS, medic, EMT, and nursing training at every level. Hard storage case is available separately (LF03465U). Three year warranty. Shipping Included  
**Product Code:** LF03952UG  
**Category:** [Full Body Manikins](#)  
**Brand:** Diversa

### Deluxe CRiSis? Manikin



Life/form® Deluxe CRiSis™ Manikin Three year warranty Shipping included  
**Product Code:** LF03955UG  
**Category:** [Full Body Manikins](#)  
**Brand:** Diversa

### Life/form? Adult CRiSis? Auscultation Manikin





Life/form® Adult CRiSis™ Auscultation Manikin includes Complete CRiSis™ Manikin with auscultation sites, one remote control with LCD display, one SmartScope™ with single- and dual-user headpieces, and hard storage case. Requires two “AA” and two “AAA” batteries (included). Shipping Included  
**Product Code:** LF03965UG  
**Category:** Full Body Manikins  
**Brand:** Diversa

### Life/form® Adult CRiSis™ Auscultation Manikin with ECG Simulator



Life/form® Adult CRiSis™ Auscultation Manikin with ECG Simulator includes Complete CRiSis™ Manikin with auscultation sites, one remote control with LCD display, one SmartScope™ with single- and dual-user headpieces, hard storage case, and ECG Simulator (LF03670U). Requires two “AA” and two “AAA” batteries (included). Three year warranty. Shipping Included  
**Product Code:** LF03966UG  
**Category:** Full Body Manikins  
**Brand:** Diversa

### Deluxe Plus Auscultation Man.



Deluxe Plus CRiSis™ Auscultation Manikin  
Adult CRiSis™ Auscultation Manikin includes Complete CRiSis™ Manikin with auscultation sites, one remote control with LCD display, one SmartScope™ with single- and dual-user headpieces, hard storage case, ECG Simulator, and electronic monitoring, memory, and printer unit light controller (LF03401U) which displays running averages and provides hard copy printout. Requires two “AA” batteries (included). Three year warranty. Shipping included

**Product Code:** LF03968UG

**Category:** [Full Body Manikins](#)

**Brand:** Diversa

### Complete Infant CRiSis? Manikin



Life/form® Complete Infant CRiSis™ Manikin  
Includes a hard carrying/storage case. Three-year warranty. Shipping Included

**Product Code:** LF03709UG-2

**Category:** [Full Body Manikins](#)

**Brand:** Diversa

### Advanced KERi? Manikin



Life/form® Advanced KERi™ Manikin Life/form® simulations have been included in KERi™ to allow the practice of more than 35 patient care procedures. The Advanced KERi™ Manikin provides the functions of the Complete KERi™ manikin with the addition of a right IV Training Arm (LF04080U) and a left Blood Pressure Training Arm (LF04079U). The Life/form® IV Arm features replaceable skins and latex veins that actually roll when palpated. A realistic flashback confirms proper needle placement, and the shoulder can be used for intramuscular injection training. The Life/form® Blood Pressure Arm reproduces the five Korotkoff sounds and allows the instructor to vary systolic and diastolic levels, pulse rate, volume, and auscultatory gap. Includes all four arms. Full three-year warranty. Shipping Included

**Product Code:** LF04022UG

**Category:** [Full Body Manikins](#)

**Brand:** Diversa

## Nasco Cleaner



Nasco Cleaner Use to remove stubborn stains from Life/form® simulators. 12-oz. bottle. Shipping Included.

**Product Code:** LF09919U

**Category:** [Full Body Manikins](#)

**Brand:** Diversa

## Obstetrical Manikin



Obstetrical Manikin - White  
 A soft carry bag is included. Size: 21" x 13" x 17".  
 Shipping included  
**Product Code:** SB23536U  
**Category:** [Full Body Manikins](#)  
**Brand:** Diversa

### STAT Manikin



STAT Manikin Components Included•  
 MANUAL DEFIBRILLATION SITES -  
 1• INTERACTIVE ECG SIMULATOR  
 - 1• STAT PRINTED SWEAT JACKET  
 - 1• INJECTION SITE 4 PACK STAT  
 ARM - 1• IV RESERVIOR BAG - 3• IV  
 REPLACEMENT VEIN KIT - 1•  
 PNEUMOTHORAX PAD 4 PACK - 1•  
 CRIC NECK SKIN REPL SKIN 10  
 PACK - 1• BLOOD POWDER PDG - 2  
 (FOR 2 GALLONS) Shipping included  
**Product Code:** SB33723UG  
**Category:** [Full Body Manikins](#)  
**Brand:** Diversa

### PDA STAT Manikin



PDA STAT Manikin Includes these replacement parts: 10 neck skins, 6 pneumothorax pads, IV vein kit, 4 IM injection pads, and 3 sets of teeth. One-year warranty. Shipping Included  
**Product Code:** SB36923UG  
**Category:** Full Body Manikins  
**Brand:** Diversa

### Simulaids STAT Baby



Simulaids STAT Baby The Stat Baby is supplied with accessories that include IV vein kit (one arm and one leg), leg skin, arm skin, 12 IO leg bones, four pneumothorax sites, two injection sites, one PICC line site, four reservoir bags, defibrillator adapters, interactive ECG simulator, simulated blood powder, and carry bag. Three-year warranty. Shipping Included  
**Product Code:** SB41171UG  
**Category:** Full Body Manikins  
**Brand:** Diversa

### Nursing Baby Non-Sim?



Nursing Baby Non-VitalSim™ Capable•  
Articulating IV arm and IV leg allows for practice of IV cannulation, medication administration, and site care and maintenance• Bilateral deltoid and bilateral thigh intramuscular injections possible• Gastronomy tube opening for care and feeding• Head with anatomical landmarks, trachea and esophagus, along with simulated lungs and stomach for the practice of many procedures, including NG, OG, tracheal care, and suctioning• Interchangeable genitalia allows for urinary catheterization with fluid return, rectal temperature simulation, and administration of suppositories• Medication and fluid administration through intraosseous infusion allowed via tibia access with landmarks at the tibial tuberosity and medial malleolus. Shipping Included  
**Product Code:** LG2057U  
**Category:** Full Body Manikins  
**Brand:** Diversa

### Deluxe Hospital Training Manikin



Deluxe Hospital Training Manikin Life-size, instructional training manikin especially developed for practicing basic treatment and care. This easy-to-maintain manikin is made of a wash-resistant plastic for long life. The non-rusting steel joints allow lifelike movements and positions necessary for various exercises - the manikin can sit in an upright position with no support. Manikin comes with removable partial dentures in the upper and lower jaw, six interchangeable injection pads, and exchangeable male and female genital organs. With an amputation stump for the right thigh and all internal organs (lungs, stomach, heart, part of the intestine, bladder, and internal genitals), this model allows the practice of virtually all patient care procedures. Shipping included  
**Product Code:** SB20111U  
**Category:** Full Body Manikins  
**Brand:** Diversa

### Susie? and Simon? Sim



Susie® and Simon® Newborn Advanced Care Simulator Features include: training arm and hand for intravenous access (also features radial and brachial arterial sites); external stoma sites with internal tanks; umbilical catheterization site with internal tank; temporal venous access sites with internal tank; soft and flexible facial skin; self-molded hair; realistic eyes; NG- exercises to demonstrate tube feeding and gastric suction; simulated ear canal; tongue may be moved from side to side; soft arms and legs rotate within the torso body for lifelike feel and position; soft hands, feet, fingers, and toes; heel stick and finger prick technique; soft upper body skin over torso for baby-like feel; bathing and bandaging activity; intramuscular injection site in upper thigh; TB test site; interchangeable male organ; urethral passage and bladder; male and female catheterization; removable internal tanks; enema administration; T-shirt and diapers; soft nylon carrying bag; and instruction manual. Shipping Included

**Product Code:** SB27321UG

**Category:** Full Body Manikins

**Brand:** Diversa

## Laboratory > Eye Protection [View](#)

Blaze Style Safety Glasses, EA



Blaze Safety Glasses; Wrap around styling with maximum coverage at brow and sides. Lightweight nylon frame with molded-in universal bridge, adjustable temples that lock in place, impact resistant polycarbonate lenses provides 99.9% UV protection, scratch resistant coating. Meets ANSI Z87.1 & CSA Z94.3

**Product Code:** 91000

**Category:** Eye Protection

**Brand:** Diversa

Bradley Safety Goggle. Impact & Splash Resistance, EA



Bradley Safety Goggle The Bradley™ series provides serious defense against impact and splash hazards, with all-day comfort and styling for maximum protection. Smoke frame, clear polycarbonate AF lens, Indirect Vent Maximum Protection, versatile fit and all-day comfort, even in the worst conditions. SPECIAL DESIGN FEATURES: • Low Profile Design - Wide viewing area and enhanced peripheral vision. Can be worn over Rx eyewear, and with half-mask respirators. • All-Day Comfort - Lightweight, cushion-soft vinyl and ultra-wide elastic headband. • Enhanced Fit - Contoured shape and form fitting design prevents intrusion. • Blocks Harmful UV - Distortion-free polycarbonate lenses block 100% of UVA & UVB rays. • AVP™ Coating - Anti-fog, abrasion-resistant lens coating, proven in the most severe conditions. • Impact & Splash Protection - Meets ANSI Z87.1 requirements.

**Product Code:** 22600

**Category:** Eye Protection

**Brand:** Diversa

Cambridge Goggle, Splash & Impact Resistant, Neoprene Band 12/Cs



Splash and impact protection in a lightweight design for maximum comfort. Ultimate Field of View - Translucent body for maximum viewing area and enhanced peripheral vision. • All-Day Comfort - Lightweight, cushion-soft vinyl and ultra-wide Neoprene headband. • Enhanced Fit - Ergonomic shape and form fitting design prevents intrusion. Can be worn over Rx eyewear, and with half-mask respirators. • Blocks Harmful UV - Distortion-free polycarbonate lenses block 100% of UVA & UVB rays. • AVP™ Coating - Anti-fog, abrasion-resistant lens coating, proven in the most severe conditions. • Impact & Splash Protection - Meets all ANSI Z87.1 & CSA Z94.3 requirements.

**Product Code:** 22521N

**Category:** Eye Protection

**Brand:** Diversa

Blaze Style Safety Glasses, Black Frame, AF Lens, EA

**Image  
Coming Soon**

Crews Blaze Safety Glasses, Black Frame, Side Shields, Adjustable Temples, Clear Anti-Fog Lenses Wrap around styling with maximum coverage at brow and sides. Lightweight nylon frame with molded-in universal bridge, adjustable temples that lock in place, impact resistant polycarbonate lenses provides 99.9% UV protection, scratch resistant coating. Meets ANSI Z87.1 & CSA Z94.3

**Product Code:** 91000-2  
**Category:** [Eye Protection](#)  
**Brand:** Diversa

**Uvex Black Frame Astro Safety Glasses OTG, EA**



Black Frame Clear Lens, Ultra-dura Anti-scratch CoatingKey Features Comfort. Style. Quality. The Uvex Astrospec 3000 Family offers an assortment of frames designed to fit multiple sizes and facial profiles. The Astrospec family is one of the most innovative products that ever hit the marketplace. It continues to set the standard for comfort, protection and style. • Same features as the Uvex Astrospec 3000 with attractive OTG (over-the-glass) styling • An economical alternative to expensive Rx eyewear • Lifetime frame guarantee • Made in USA Hazards Abrasion Airborne Particulates Biohazard Electrical & Arc Impact Low Visibility Regulations ANSI Z87.1-2003 (High Impact) - Meets ANSI Z87.1-2003 (High Impact) ANSLZ.87.1/1989, CA 18,827 - Meets ANSLZ.87.1/1989, CA 18,827 (http://www.mte.gov.br/Empregador/segsau/Pesquisa/CA\_DET.asp?vNRCAProc=18827&Equipamento=00&NOEquipamento=&Fabricante=00&NOFabricante=) CSA Z94.3 - Tested by Honeywell to meet the requirements of the CSA Z94.3 standard

**Product Code:** S2500  
**Category:** [Eye Protection](#)  
**Brand:** Diversa

**Uvex Astro OTG Patriot Frame**



Patriot - Red, White, Blue Frame Clear Lens, Ultra-dura Anti-scratch CoatingKey Features Comfort. Style. Quality. The Uvex Astrospec 3000 Family offers an assortment of frames designed to fit multiple sizes and facial profiles. The Astrospec family is one of the most innovative products that ever hit the marketplace. It continues to set the standard for comfort, protection and style. • Same features as the Uvex Astrospec 3000 with attractive OTG (over-the-glass) styling • An economical alternative to expensive Rx eyewear • Lifetime frame guarantee • Made in USA Hazards Abrasion Airborne Particulates Biohazard Electrical & Arc Impact Low Visibility Regulations ANSI Z87.1-2003 (High Impact) - Meets ANSI Z87.1-2003 (High Impact) ANSLZ.87.1/1989, CA 18,827 - Meets ANSLZ.87.1/1989, CA 18,827 (http://www.mte.gov.br/Empregador/segsau/Pesquisa/CA\_DET.asp?vNRCAProc=18827&Equipamento=00&NOEquipamento=&Fabricante=00&NOFabricante=) CSA Z94.3 - Tested by Honeywell to meet the requirements of the CSA Z94.3 standard

**Product Code:** S2530  
**Category:** [Eye Protection](#)  
**Brand:** Diversa

**Uvex Futura 9301 Goggle, Clear Lens, EA**



Uvex Futura is an OTG goggle with wraparound design featuring excellent panoramic vision. Frosted browguard reduces overhead glare. Indirect venting system, along with high-performance Uvextreme anti-fog coating minimizes fogging in extreme environments. Made in USA. Features & Benefits: Available in Uvextreme anti-fog lens coating Fits over most prescription eyewear Available in clear and welding shade lens tints Economical lens replacement system Wraparound sport style with frosted browguardCertifications ANSI Z87.1-2010 Tested by Honeywell to meet the requirements of the CSA Z94.3 standard

**Product Code:** S345C  
**Category:** [Eye Protection](#)  
**Brand:** Diversa

**Laboratory > Microscopes [View](#)**

**Mi5 Infinity Labscope, Plan Binocular, 4-10-20-40LWD-100x, LED**





Mi5 Infinity Labscope, Plan Binocular, 4-10-20-40LWD-100x, LED

The Mi5 was developed for use in a broad range of applications from routine research and lab inspections, to more specific healthcare applications such as pathology, cytology, oncology, hematology, and gynecology. Bright white LED illumination provides clarity and maintains constant color temperature for most specimens. Superior infinity optics and proven, ergonomic design make the Mi5 comfortable to use for extended periods of time. The Mi5 is equipped to ease the burden on the busiest and most discriminating lab technicians and specialists.

**APPLICATIONS** KOVA slide system for urinalysis, pathology, hematology, oncology, gynecology, research, microbiology

**HEAD** Binocular (Seidentopf), Trinoc available. Digital cameras and adapters available. Diopter adjustment +/-5. Inclined 30°. 10X/20X Super WF HP eyepieces. Interpupillary distance range 50-75mm.

**NOSEPIECE** 10X/20X Super WF HP eyepieces. Interpupillary distance range 50-75mm. Reverse quintuple nosepiece. Multiple ball bearing mounted.

**OBJECTIVES** Infinity Plan objectives 4X, 10X, 20X, 40XR, 100XR (oil) 50X (oil) and 60x dry objectives are also available. Anti-fungal, parfocal, parcentric, color-coded.

**STAGE** Mechanical stage (135mm X 184mm). Coaxial drive controls, metal rack & pinion. Range of traverse: 73mm x 43mm. Stage locking lever. Slow-close hydraulic slide finger

**FOCUS** Moveable Abbe condenser, NA 1.25. Iris Diaphragm

**ILLUMINATION** LED provides 10,000+ hours of light and consistent, even brightness. Variable light adjustment: 0-20W output. Simple koehler illumination. 90-240V / 50-60Hz automatic-switching power cord.

**OPTIONS** Phase contrast, 50x oil and 60x dry objectives, camera attachments, Darkfield, Epi-fluorescence

**Product Code:** M5BO5AiPL3

**Category:** [Microscopes](#)

**Brand:** Diversa

**i4 Infinity Semi-Plan Binocular 4 Obj. LED**



i4 Infinity Semi-Plan Binocular 4 Obj. LED, Medical-Grade Microscope, Anti-Fungal Coating On All Lenses. The i4 modular series microscope features exceptional optical quality and expandability for top-notch performance in the lab. Use the rotating head to adjust the height for taller users. Infinity Plan and Semi-Plan optics with a 30-year anti-fungal coating match quality with value within any clinic's budget. The i4 microscope provides comfort, durability, dependability and superior imaging for the lifetime of the laboratory. Accessories include: blue and green filters, dust cover, immersion oil, manual and warranty card. HEAD Binocular (Seidentopf), Trinoc available. Digital cameras and adapters available. Diopter adjustment. Inclined 30°, rotates 360°. 10X/18 WF Eyepieces. (10X/20X Super WF HP eyepieces available). Interpupillary distance range

48-75mm NOSEPIECE Reverse quadruple nosepiece. Multiple ball bearing mounted. OBJECTIVES Infinity Semi-Plan or Plan objectives 4X, 10X, 40XR, 100XR (oil) 50X (oil) objective is also available Anti-fungal, parfocal, parcentric, color-coded. STAGE Mechanical stage (140mm X 155mm). Coaxial drive controls, metal rack & pinion. Range of traverse: 73mm x 43mm. Stage locking lever. Slow-close hydraulic slide finger. FOCUS Coarse adjustment: range of 30mm. Tension control knob ILLUMINATION Moveable Abbe condenser, NA 1.25. Iris Diaphragm. LED "daylight" long-life light source. Variable light adjustment: 0-20W output. 100-240V / 50-60Hz automatic-switching power cord. OPTIONS Phase contrast, 50x oil objective, camera attachments, and more.

**Product Code:** Mi4-BN4AiSL3

**Category:** [Microscopes](#)

**Brand:** Diversa

**Revelation III Medical Microscope, Binocular, Achromatic, LED**



Revelation III Medical Microscope, Binocular, Achromatic, LED  
 The Revelation III professional-grade microscope is a best-seller into physician and veterinarian clinics, as well as universities and medical schools. Equipped for performance, its features include titanium-finished DIN achromatic or DIN Plan optics and a 30-year anti-fungal coating. The Revelation III is the choice for superior performance at a great value! Included accessories: three 0.5 amp fuses, mirror attachment (for field use), blue and green filters, dust cover, immersion oil, spare bulb, manual and warranty card.

**HEAD** Binocular (Seidentopf). Inclined 30°, rotates 360°. Diopter adjustment. 10X/18 wide field eyepieces (10X/20HP available). Monocular, trinocular, dual binocular and 45° sliding heads available. Interpupillary distance range 55-75mm.

**NOSEPIECE** Quadruple forward-facing nosepiece. Multiple ball bearing mounted.

**OBJECTIVES** DIN Achromatic or DIN Plan. 30 year anti-fungal coating. 4X, 10X, 40X, 100XR (oil). Parfocal, parcentric, color-coded.

**STAGE** Mechanical stage (140mm x 140mm). Coaxial drive controls. Range of traverse is 73mm x 43mm. Stage locking lever. Slow-close hydraulic slide finger.

**FOCUS** Coarse adjustment: range of 30mm. Tension control knob.

**ILLUMINATION** Moveable Abbe condenser, NA 1.25, rack & pinion Iris diaphragm. 110V/220V switchable electronics. 12V DC battery input available.

Light Options: Variable halogen light source (12V/20W bulb). Variable LED light source (7W bulb).

**Product Code:** R#-BN4A-DAL3

**Category:** [Microscopes](#)

**Brand:** Diversa

**Revelation III Medical Microscope, Binocular, Achromatic, LED - Revelation III Medical Microscope, Binocular, PLAN, LED**



**Product Code:** R3-BN4A-DPL3  
**Category:** [Microscopes](#)  
**Brand:** Diversa

#### **Cover Glass 22mm x 22mm #1 (0.13-0.18mm), 200/Bx**



Microscope cover glass is a very thin square piece of glass that is placed over a drop of liquid on a microscope slide. Because of surface tension, the liquid drop alone tends to sit in a thick dome. With a cover glass in place, the drop is flattened out, allowing the clinician to focus with high power very close to the specimen. The cover glass also confines the specimen to a single plane which reduces the amount of focusing necessary. The cover glass also protects the objective lens from immersion into the liquid.#1 cover glass is recommended for oil immersion or high resolution work.#2 is used for general applications.

**Product Code:** 3704  
**Category:** [Microscopes](#)  
**Brand:** Diversa

#### **Student Pro Microscope, 4 Adj. Coaxial, LED**



Student Pro Microscope, 4 Adj. Coaxial, LED  
 The Student Pro is ready for any teacher, student, or hobbyist that wants the “professional grade” in student scopes. With our proven design the Student Pro includes many of the advanced features you would find on any laboratory quality microscope – built in mechanical stage, heavy cast alloy, all metal gearing, moveable 1.25 ABBE condenser, and clear DIN objectives. Accessories include a dust cover, blue and green filters, fuse, and spare bulb. Get accurate, clear results on a student-friendly scope without sacrificing the quality of observation with the Student Pro.

**HEAD** Standard monocular head, Bearing mounted, rotates 360°, 10X/18 wide field eyepiece, Locked-in eyepiece with pointer installed

**CONSTRUCTION** Heavy cast alloy, Acid and reagent resistant finish, All metal gearing

**OBJECTIVES** Four position nosepiece, DIN Achromatic 4X, 10X, 40X (retractable), Optional 100x oil objective, Parfocal and parcentric, Color coded

**STAGE** Built-in “true-mechanical stage”, Stage size: 124mm x 115mm, Built-in “True-Mechanical Stage”, Variable LED base

**ILLUMINATION** Moveable NA 1.25 ABBE condenser, Iris Diaphragm, Variable LED base, Auto-switching 110-240V

**ADJUSTMENT CONTROLS** Coaxial coarse and fine focus, Adjustable Stage Stop.

**INCLUDES** Blue and green filters, Filter holder, Dust cover, Spare bulb and fuse.

**Product Code:** EDM-MM4A-DAL3  
**Category:** [Microscopes](#)  
**Brand:** Diversa

**Bristoline Binocular Microscope Semi-Plan Obj.**



Bristoline Binocular Microscope Semi-Plan Obj. Sharp, high contrast images and a rigid, cast alloy aluminum frame make the BR3002 Microscope Series an excellent choice for educators, medical and veterinary professionals. Durable and ergonomic by design the 3002 is built for many years of dependable use.

**Specifications**  
**Eyepieces:**

WF10x/18.5mm field of view, a pointer is standard in one eyepiece. Eyepieces are locked-in to prevent classroom tampering.

Eyepieces accept 21mm reticles.

**Viewing Head:** Binocular or monocular, 30°

inclined and rotatable 360°. Single diopter

adjustment. Interpupillary distance

adjustment 55 – 75mm.

**Nosepiece:** Rear facing, quadruple, ball bearing with

positive click stops to ensure

parcentration.

**Objectives:** Choice of

standard achromat or plan objectives.

Standard configuration includes DIN 4x,

10x, Semi-plan 40xR and 100xR oil

immersion.

**Stage:** Stage size 140mm x

140mm. Travel area: 75mm (X) x 50mm

(Y) movement with right hand control.

Vernier scale reading to

0.1mm.

**Condenser:** N.A. 1.25 Abbe

condenser on rack and pinion with iris

diaphragm and swing-out filter holder. A

clear blue filter is supplied.

**Stand:** Cast alloy aluminum. A built-in fixed focus

stop allows for rapid image focusing

while protecting specimens.

**Illumination:** 6 volt 20 watt halogen with variable

intensity control; lamp is easily

changeable by removing the field lens

unit.

**Focusing System:** Coaxial coarse and

fine focus controls with an adjustable

tension control. All metal gears.

**Optional Accessories:** Plan 20x, 50xR oil and 60xR

objectives, WF15x or WF20x eyepieces,

slider phase contrast set, microscope carry

case and 21mm reticles

**Miscellaneous:** 5 year limited warranty for parts, labor and

electronic components. Dust cover,

immersion oil and instruction manual

included with each complete model.

**Product Code:** BR3002

**Category:** [Microscopes](#)

**Brand:** Diversa

## Bristoline Monocular Microscope Semi-Plan



Monocular Head; 10x, Semi-Plan 40xR\*,100xR\* Objectives; Abbe Condenser; 5 watt fluor.

IlluminationFeaturing the latest advancements in optical & mechanical design, Bristoline®'s BR3079 microscope series offers increased functionality and reliability for routine clinical and classroom work. Sturdy, precision built and ergonomically designed the BR3079 series incorporates high quality, coated optics and cool, bright fluorescent illumination to deliver high contrast, sharp images at a reasonable price.Eyepiece: WF10x eyepiece with pointer, 18mm field of view. The eyepiece is locked-in to prevent classroom tampering.Head: Monocular viewing body inclined 30° and rotatable 360° to maximize comfort, convenience and ease of sharing.Stand: Ergonomically designed with comfortable low-position coaxial coarse and fine focusing controls and an adjustable tension control to maximize individual comfort and convenience. A built-in fixed focus stop allows for rapid image focusing while protecting specimens and objectives. Acid resistant, lustrous almond finish.Nosepiece: Triple revolving ball-bearing nosepiece with positive click stops to ensure parcentration.Objectives: DIN standard achromat objectives, parfocal, parcenter and color-coded.Stage: 119 mm x 119 mm with locked-on stage clips, drilled and tapped to accept an optional mechanical stage.Substage: Built-in N.A. 0.65 condenser with five aperture disc diaphragm or N.A. 1.25 Abbe condenser with iris diaphragm and filter holder.Focusing: Coaxial coarse and fine focus mechanism facilitates smooth, precise focusing. A built-in slip clutch system and preset focus stop prevent damage to slides and objectives. Ergonomic hand rests below the focusing mechanism provide maximum comfort during extended viewing periods.Illumination: 5 watt fluorescent in-base illuminator with collector lens and ON/OFF switch. Fluorescent bulb has a 10,000-hour rated life. Grounded 3-wire line cord with cord hanger for simple and easy storage.Comes complete with 5 year warranty for manufacturing defects and dust

**Product Code:** BR3071

**Category:** [Microscopes](#)

**Brand:** Diversa

**Cover Glass 22mm x 22mm #1 (0.13-0.18mm), 200/Bx - Cover Glass 22mm x 22mm #1 (0.17-0.25mm), 200/Bx**



Cover Glass 22mm x 22mm #1  
(0.17-0.25mm), 200/Bx  
**Product Code:** 3705  
**Category:** [Microscopes](#)  
**Brand:** Diversa

**Microscope Slides 3" x 1", Clear, 144/Bx**



Microscope Slides 3" x 1", Clear,  
144/Bx Exceptionally clear, water-white,  
extra hard glass. Rounded corners, ground  
and polished edges. Non-corrosive and  
non-fogging. Pre-Cleaned Thickness:  
1mm-1.2mm  
**Product Code:** 3703-2P  
**Category:** [Microscopes](#)  
**Brand:** Diversa

**Bristoline Binocular Microscope, Plan Obj. LED**





Bristoline Binocular Microscope, Plan Obj. LED Item BR3000-LED & BR3001-LED: Bristoline Microscope BR3000-LED Series delivers Superb Optics, Durable and High Performance. Meeting the standards of life science professionals and students. Newly designed infinity plan optical system is the best in class 20 mm field of view. Super bright 3 watt LED illuminator. Outstanding resolution, precision and enhanced illumination Simplified Digital Imaging - Trinocular with digital camera and software option. Excellent color reproduction. Fast frame rates. An intuitive and comprehensive system for image capture, measurement, annotation and report generation. Images can be easily e-mailed, shared, compare or stored for archive and future reference. Warranty: Five (5) year limited warranty for part, labor and electronic components. One (1) year warranty for LED bulb. BR3000-LED: Binocular BR3001-LED: Trinocular  
**Product Code:** BR3000-LED  
**Category:** [Microscopes](#)  
**Brand:** Diversa

### Microscope Slides 3" x 1", Clear, 144/Bx - Microscope Slides 3" x 1" Frosted, 144/Bx



**Product Code:** 3703-2F  
**Category:** [Microscopes](#)  
**Brand:** Diversa

## Laboratory > Pipettes [View](#)

### Transfer Pipette, 5.0mL Blood Bank Pipette, 500/Bx



Transfer Pipette, 5.0mL Blood Bank  
Pipette, graduated to 2mL 155mm bulb  
draw -2.0mL, Non-Sterile, LDPE (low  
density polyethylene) 500/Bx

**Product Code:** 137050

**Category:** [Pipettes](#)

**Brand:** Diversa

#### Transfer Pipette, 3.0mL Small Bulb Pipette, 500/Bx



Transfer Pipette, 3.0mL Small Bulb  
Pipette, graduated to 1mL 140mm bulb  
draw -2.2mL, Non-Sterile, LDPE (low  
density polyethylene) 500/Bx

**Product Code:** 137035

**Category:** [Pipettes](#)

**Brand:** Diversa

**Surgical Equipment > Surgical Trays** [View](#)

[Minor Single Basin Surgical Tray I, Gowns, 2/Cs](#)



Minor Single Basin Surgical Tray I includes: 1/ea Basin, Emesis; 1/ea Basin, Ring; 2/ea Blade, No.15; 2/ea Bowl, 32 oz (946 ml), Graduated.1/ea Cautery Pencil, PB, w/Holster; 2/ea Cup, Medicine, Clear, 2 oz (60 ml); 1/ea Drape, 3/4, 53 x 77 (135 x 196 cm), Aurora.10/ea Gauze, 4 x 4 (10 x 10 cm), 16-Ply; 10/ea Gauze, 4 x 4 (10 x 10 cm), 16-Ply, X-Ray; 1/ea Gown, Sirius, Non-Rein, XL; 1/ea Gown, Sirius, Non-Rein, XL, w/Abs Towel.2/ea Soft Light Handle Cover; 1/ea Mayo Stand Cover; 1/ea 18 G x 1.5 (4 cm) Needle; 1/ea 25 G x 1.5 (4cm) Needle; 1/ea Foam/Magnetic Needle Counter, 20 ct.1/ea Premium Wet Tray; 1/ea Skin/Utility Marker, Ruler and Labels; 1/ea Syringe, 10 ml, L/L; 1/ea Syringe, Bulb; 1/ea Table Cover, 50 x 90 (127 x 229 cm).1/ea Tubing, Suction, 1/4 x 240 (0.63 x 610 cm); 1/ea Tip, Cautery, 2.5 (7 cm), PTFE; 10/ea Blue OR Towels; 1/ea Yankauer, Bulb Tip, w/out Vent.

**Product Code:** SO106

**Category:** [Surgical Trays](#)

**Brand:** Diversa

## Sterile Basic Double Basin Surgical Tray II



Bouble Basin Tray includes:2/ea Basin, Emesis; 2/ea BasinRing; 2/ea Bowl32 oz (946 ml)Graduated2/ea CSR Wrap, 54 x 54 (137 x 137 cm)2/ea Cup, Medicine, Clear, 2 oz (60 ml).

**Product Code:** 06600

**Category:** [Surgical Trays](#)

**Brand:** Diversa

## Surgical Equipment > Skin Prep Trays [View](#)

### Kendall Wet Skin Scrub Trays, w/Wing grip Sponge, 20/Cs



Kendall Wet Skin Scrub Tray:CSR Wrapped(2) Cotton-Tipped Applicators(2) White Absorbent Towels(2) Blue Blotting Towels(3) Sponge Sticks(1) 3.7 PVP I Scrub(1) 3.7 PVP 1.0% Paint(1Pr) Nitrile, Latex Free Gloves, Unwrapped(6) Small Wing-grp Sponges20 Trays/Case  
**Product Code:** 41589-2  
**Category:** [Skin Prep Trays](#)  
**Brand:** Diversa

### Wet Skin Scrub 4 Compartment Tray, 20/CS



Wet Skin Scrub Tray:4 Compartment TrayCSR Wrapped(2) Cotton Tipped Applicators(2) White Absorbent Towels(2) Blue Blotting Towels(3) Sponge Sticks(1) 4oz PVP I Scrub(1) 2oz PVP 1% Paint(1Pr) Vinyl Gloves(6) Small Wing-Grp Sponges20/Cs  
**Product Code:** DY70372  
**Category:** [Skin Prep Trays](#)  
**Brand:** Diversa

### Wet Skin Scrub Tray, 20/Cs



Core components of each tray include:  
 6 Small wing sponges  
 3 Sponge sticks  
 4 oz. (118 ml) PVP-I scrub  
 2 Absorbent towels  
 2 Blotting towels  
 2 Cotton-tip applicator  
 4-Compartment tray  
 Removable double tray  
 Pair of gloves and CSR wrap.  
 20/CS  
 This Scrub Tray Also Includes:  
 1 3oz PVP I Paint  
 1 Pr Nitrile Gloves  
**Product Code:** DY70760  
**Category:** [Skin Prep Trays](#)  
**Brand:** Diversa

## Surgical Equipment > Shave Prep Tray [View](#)

### Shave Prep Tray, Single Compartment, EA



Shave Prep Tray includes:  
 razor with stainless steel blade  
 waterproof drapes  
 soap-impregnated sponges  
 single compartment tray  
 absorbent towel  
 2 cotton-tipped applicators.  
**Product Code:** DY70822  
**Category:** [Shave Prep Tray](#)  
**Brand:** Diversa

## Surgical Equipment > Surgical Scrub Brushes & Topical Antiseptics

[View](#)

### Betadine Scrub Brush w/ Povidone Iodine 1%, 30/Bx



BD E-Z Scrub with Povidone Iodine, 1% Product line includes popular and efficacious antimicrobial formulations, including CHG, PCMX, and Povidone Iodine. • Proprietary polyethylene soft bristles enhance mechanical action while reducing skin irritation. • Soft sponge provides gentle cleaning on irritated areas or when firm mechanical action is not required. • Ergonomic brush design allows greater user comfort and effectiveness, ultimately improving compliance.

**Product Code:** 372053

**Category:** [Surgical Scrub Brushes & Topical Antiseptics](#)

**Brand:** Diversa

**Betadine Scrub Brush w/ Povidone Iodine 1%, 30/Bx - BD E-Z Scrub Dry Sterile Brush, 30/Bx**



**Product Code:** 371603

**Category:** [Surgical Scrub Brushes & Topical Antiseptics](#)

**Brand:** Diversa

**Betadine Scrub Brush w/ Povidone Iodine 1%, 30/Bx - BD E-Z Scrub with BD Ultradex<sup>®</sup>, 3% Chloroxylenol (PCMX) with emolli**



**Product Code:** 374081  
**Category:** [Surgical Scrub Brushes & Topical Antiseptics](#)  
**Brand:** Diversa

### **Povidone-Iodine Prep Solution USP 10% 1 Gallon**



Povidone-Iodine Prep Solution USP 10% Chester offers both a prep solution at 10% PVP (1% available Iodine) and a scrub solution at 7.5% (.75% available Iodine). Chester prep and scrub solutions are ideal for pre- and post-operative skin cleansing and for the treatment and prevention of infections in wounds, ulcers, abrasions and burns. All of our PVP-Iodine products are safety sealed for patient protection. Most bottles have a sealed flip-top cap. 32-oz. bottles have a sealed screw cap

**Product Code:** 08228  
**Category:** [Surgical Scrub Brushes & Topical Antiseptics](#)  
**Brand:** Diversa

### **Povidone-Iodine Scrub Solution USP 7.5%, 1 Gallon**



Povidone-Iodine Scrub Solution USP 7.5% Chester offers both a prep solution at 10% PVP (1% available Iodine) and a scrub solution at 7.5% (.75% available Iodine). Chester prep and scrub solutions are ideal for pre- and post-operative skin cleansing and for the treatment and prevention of infections in wounds, ulcers, abrasions and burns. All of our PVP-Iodine products are safety sealed for patient protection. Most bottles have a sealed flip-top cap. 32-oz. bottles have a sealed screw cap.  
**Product Code:** 08328  
**Category:** [Surgical Scrub Brushes & Topical Antiseptics](#)  
**Brand:** Diversa

## Surgical Equipment > Instrument Tables [View](#)

### SS8018 Instrument Table 20" x 16" x 34" Ea



SS8018 Instrument Table 20" x 16" x 34" HWelded, all stainless steel construction 16 gauge legs, 1.25" (3.18cm) outside diameter Edges bent and hemmed for added rigidity Top and shelf stiffeners for additional strength 2" (5.1cm) ball bearing swivel casters 3 year limited warranty Width: 20" (50.8cm) Height: 34" (86.4cm) Depth: 16" (40.6cm) Distance between shelves: 19" (48.3cm) Optional Accessories 117 - Swivel casters locking 2" (set of 4) 479 - rubber tips in place of casters (table will be 2" [5.1cm] lower) Freight Included Dock To Dock. Inside Delivery & Liftgate Service Available.  
**Product Code:** SS8018  
**Category:** [Instrument Tables](#)  
**Brand:** Diversa



### SS8008 Instrument Table 48" x 24" x 34" Ea



SS8018 Instrument Table 20" x 16" x 34" HWelded, all stainless steel construction 16 gauge legs, 1.25" (3.18cm) outside diameter Edges bent and hemmed for added rigidity Top and shelf stiffeners for additional strength 2" (5.1cm) ball bearing swivel casters 3 year limited warranty Width: 48" (50.8cm) Height: 34" (86.4cm) Depth: 24" (40.6cm) Distance between shelves: 19" (48.3cm) Optional Accessories 117 - Swivel casters locking 2" (set of 4) 479 - rubber tips in place of casters (table will be 2" [5.1cm] lower) Freight Included Dock To Dock. Inside Delivery & Liftgate Service Available.

**Product Code:** SS8008

**Category:** [Instrument Tables](#)

**Brand:** Diversa

### SS8016 Instrument Table 30" x 16" x 34" Ea



SS8018 Instrument Table 20" x 16" x 34" HWelded, all stainless steel construction 16 gauge legs, 1.25" (3.18cm) outside diameter Edges bent and hemmed for added rigidity Top and shelf stiffeners for additional strength 2" (5.1cm) ball bearing swivel casters 3 year limited warranty Width: 30" (50.8cm) Height: 34" (86.4cm) Depth: 16" (40.6cm) Distance between shelves: 19" (48.3cm) Optional Accessories 117 - Swivel casters locking 2" (set of 4) 479 - rubber tips in place of casters (table will be 2" [5.1cm] lower) Freight Included Dock To Dock. Inside Delivery & Liftgate Service Available.

**Product Code:** SS8016

**Category:** [Instrument Tables](#)

**Brand:** Diversa

### SS8014 Instrument Table 48" x 20" x 34" Ea



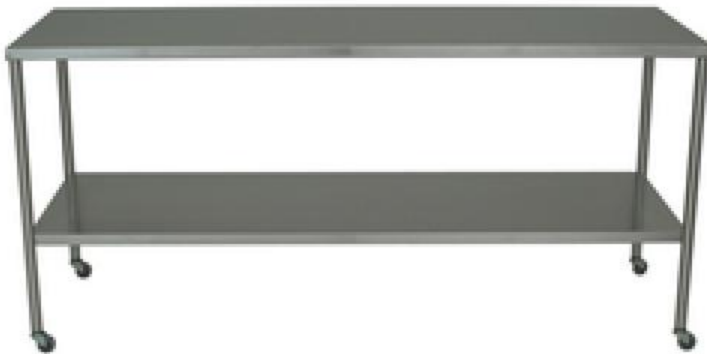
SS8018 Instrument Table 20" x 16" x 34" H  
Welded, all stainless steel construction  
16 gauge legs, 1.25" (3.18cm) outside diameter  
Edges bent and hemmed for added rigidity  
Top and shelf stiffeners for additional strength  
2" (5.1cm) ball bearing swivel casters  
3 year limited warranty  
Width: 48" (50.8cm)  
Height: 34" (86.4cm)  
Depth: 20" (40.6cm)  
Distance between shelves: 19" (48.3cm)  
Optional Accessories  
117 - Swivel casters locking 2" (set of 4)  
479 - rubber tips in place of casters (table will be 2" [5.1cm] lower)  
Freight Included  
Dock To Dock.  
Inside Delivery & Liftgate Service Available.

**Product Code:** SS8014

**Category:** [Instrument Tables](#)

**Brand:** Diversa

#### SS8000 Instrument Table 72" x 24" x 34" Ea



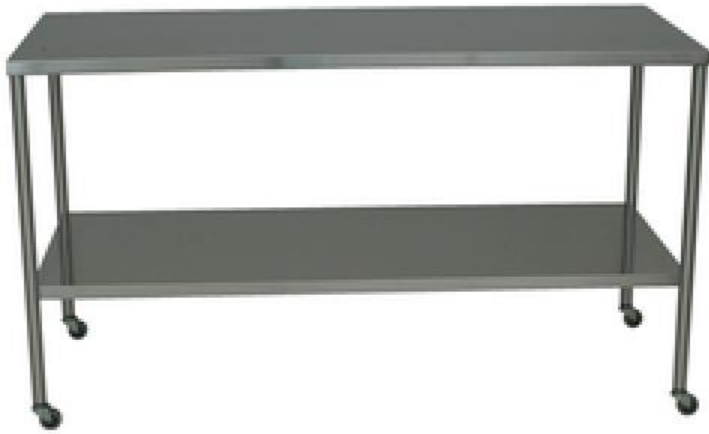
SS8018 Instrument Table 20" x 16" x 34" H  
Welded, all stainless steel construction  
16 gauge legs, 1.25" (3.18cm) outside diameter  
Edges bent and hemmed for added rigidity  
Top and shelf stiffeners for additional strength  
2" (5.1cm) ball bearing swivel casters  
3 year limited warranty  
Width: 72" (50.8cm)  
Height: 34" (86.4cm)  
Depth: 24" (40.6cm)  
Distance between shelves: 19" (48.3cm)  
Optional Accessories  
117 - Swivel casters locking 2" (set of 4)  
479 - rubber tips in place of casters (table will be 2" [5.1cm] lower)  
Freight Included  
Dock To Dock.  
Inside Delivery & Liftgate Service Available.

**Product Code:** SS8000

**Category:** [Instrument Tables](#)

**Brand:** Diversa

#### SS8004 Instrument Table 60" x 24" x 34" Ea



SS8018 Instrument Table 20" x 16" x 34" H  
Welded, all stainless steel construction  
16 gauge legs, 1.25" (3.18cm) outside diameter  
Edges bent and hemmed for added rigidity  
Top and shelf stiffeners for additional strength  
2" (5.1cm) ball bearing swivel casters  
3 year limited warranty  
Width: 60" (50.8cm)  
Height: 34" (86.4cm)  
Depth: 24" (40.6cm)  
Distance between shelves: 19" (48.3cm)  
Optional Accessories  
117 - Swivel casters locking 2" (set of 4)  
479 - rubber tips in place of casters (table will be 2" [5.1cm] lower)  
Freight Included  
Dock To Dock.  
Inside Delivery & Liftgate Service Available.  
**Product Code:** SS8004  
**Category:** [Instrument Tables](#)  
**Brand:** Diversa

## Surgical Equipment > Light Handles [View](#)

### Disposable Light Handles 25/Bx



Disposable Light Handles 25/Bx  
Plastic Light Handles for use with Surgical Lighting  
**Product Code:** 31140208  
**Category:** [Light Handles](#)  
**Brand:** Diversa

## Surgical Equipment > Basin Stands [View](#)

### Basin Stands, Twin & Single Bowl--Twin Bowl Basin Stand & Shelf



Basin Stands, Twin & Single Bowl--  
Twin Bowl Basin Stand & Shelf?  
Heavy duty stainless steel tubular  
framework? Two or Single 13"  
(33.0cm) basins, 7Qt. (6.6L) capacity?  
Rubber bumpers inside basin holder?  
Single shelf below basins? 2" (5.1cm)  
ball bearing swivel casters? 3 year  
limited warrantyHeight: 32" (81.3cm)?  
Basin diameter: 13" (33.0cm)? Basin  
capacity (ea.): 7 Qt. (6.2L)Freight  
Included Dock To DockInside Delivery  
& Liftgate Service Available!  
**Product Code:** SS8360  
**Category:** [Basin Stands](#)  
**Brand:** Diversa

**Basin Stands, Twin & Single Bowl--Twin Bowl Basin Stand & Shelf - Single Basin Stand w/Shelf**



**Product Code:** SS8865  
**Category:** [Basin Stands](#)  
**Brand:** Diversa

**Surgical Equipment > Mayo Stands, Mobile & Post** [View](#)

[Stainless Steel Mayo Stands---13" x19" Stainless Tray w/Ft Pdl](#)



Stainless Steel Mayo Stands SS8310All stainless steel constructionFoot pedal height control13" x 19" (33.0cm x 48.3cm) removable stainless steel trayTip-resistant, weighted flat base2" (5.1cm) ball bearing swivel casters3 year limited warrantyMin. Height: 38.25" (97.2cm)Max. Height: 63.875" (162.2cm)Tray dimensions: 13" x 19" (33.0cm x 48.3cm)SS8311All stainless steel constructionFoot pedal height control16" x 21" (40.6cm x 53.3cm) removable stainless steel trayTip-resistant, weighted flat base2" (5.1cm) ball bearing swivel casters3 year limited warrantyMin. Height: 38.25" (97.2cm)Max. Height: 63.875" (162.2cm)Tray dimensions: 16" x 21" (40.6cm x 53.3cm)  
**Product Code:** SS8310  
**Category:** Mayo Stands, Mobile & Post  
**Brand:** Diversa

**Stainless Steel Mayo Stands---13" x19" Stainless Tray w/Ft Pdl - Stainless Steel Mayo Stand 16" x21" Stainless Tray w/Ft Pdl**



**Product Code:** SS8311  
**Category:** [Mayo Stands, Mobile & Post](#)  
**Brand:** Diversa

**[Mobile Mayo Stands----Premuim Model w/Tray](#)**



Mobile Mayo Stands: Premium, Mobile Instrument Stand, M20 • Stable, 5-leg cast aluminum base • Easy positioning with no need to tip style base • 1" chrome plated pole and frame • Dual wheel, soft roll casters • Scuff guard end caps on each leg • Weight: 16 lbs. • Box dimensions: 23"x27"x8" base diameter height range 23" 31" – 50" • Mobile, Stainless Steel, Instrument Stand, MS27 • 1" stainless steel pole and tray • Stable, easy position, 5-leg, gray nylon base • Easy positioning with no need to tip style base • 5 easy-roll casters • Weight: 17 lbs. • Box dimensions: 23"x27"x8" base diameter height range 24" 31" – 50" • Value Instrument Stand, M29 • Stable, 5-leg nylon base • Easy positioning with no need to tip style base • 1" chrome plated pole and frame • Dual wheel, soft roll casters • Weight: 16 lbs. • Box dimensions: 23"x27"x8" base diameter height range 21" 31" – 50" • Mobile, Stainless Steel, Instrument Stand, MS29 • 1" stainless steel frame, tray and base • Easy positioning with no need to tip style base • Moves easily on 4 ball bearing casters • Stable heavy base design • Weight: 18 lbs. • Box dimensions: 26"x14"x4" base diameter height range 22" 33" – 49" • Freight Included!

**Product Code:** M20  
**Category:** Mayo Stands, Mobile & Post  
**Brand:** Diversa

**Mobile Mayo Stands----Premium Model w/Tray - Mobile Stainless Steel Mayo Stand**





**Product Code:** MS27

**Category:** Mayo Stands, Mobile & Post

**Brand:** Diversa

### Double & Single Post Mayo Stands----Double Post



Double & Single Post Mayo Stands: Double Post Mayo Stand, M22• 2 ball bearing, rubber casters• 1" chrome plated poles and base• Tip style position base• Weight: 16 lbs. • Box dimensions: 22"x32"x7" base height range 21" x 20" 34" – 54" Single Post Mayo Stand, M21• 2 ball bearing, rubber casters• 1" chrome plated poles and base• Tip style position base• Weight: 12 lbs. • Box dimensions: 20"x24"x8" base height range 18" x 22" 31" – 50" \*Single Post, Stainless Steel, Mayo Stand, MS23• 1" stainless steel frame, tray and base• Tip style position base• 2 ball bearing rubber casters• Weight: 12 lbs. • Box dimensions: 20"x24"x8" base height range 18" x 22" 31" – 50"

**Product Code:** M22

**Category:** Mayo Stands, Mobile & Post

**Brand:** Diversa

### Double & Single Post Mayo Stands----Double Post - Single Post Mayo Stand



**Product Code:** M21

**Category:** [Mayo Stands, Mobile & Post](#)

**Brand:** Diversa

### [Double & Single Post Mayo Stands----Double Post - Stainless Steel Single Post Mayo Stand](#)



**Product Code:** MS23

**Category:** [Mayo Stands, Mobile & Post](#)

**Brand:** Diversa

## [Surgical Equipment > Hampers](#) [View](#)

### [Square Tilt Lid Hampers, White & Red Tops, ---White Tilt Lid](#)



Square Tilt Lid Hampers, White & Red Top  
 Square Tilt-Lid Hamper• White, epoxy coated, steel lid• Fold-down prop to keep lid open• Chrome plated steel frame• Pedal activated lid• Heavy duty, bag support and holder• White holder for extra plastic bags• Four 3" casters, 2 with locks• Weight: 25 lbs. • Box dimensions: 20"x22"x10" length width height 185/8" 191/2" 371/2" Freight Included!

**Product Code:** H40

**Category:** [Hampers](#)

**Brand:** Diversa

**Square Tilt Lid Hampers, White & Red Tops, ---White Tilt Lid - Square Tilt Lid Hamper, Red Top**



**Product Code:** H40R

**Category:** [Hampers](#)

**Brand:** Diversa

**18" Round Lid Hamper, Chrome & Red Top---Chrome Top**



18" Round Lid Hamper, Chrome & Red Top  
18" Round Tilt-Lid Hamper•  
Chrome plated, steel lid and frame•  
Spring-loaded, foot operated lid• M-style base with bag support• 4 rubber wheel, ball bearing casters• Shipping weight: 20 lbs. • Box dimensions: 27"x21"x8" diameter height 19 1/2" 36 1/2"  
**Product Code:** H41  
**Category:** [Hampers](#)  
**Brand:** Diversa

**18" Round Lid Hamper, Chrome & Red Top---Chrome Top - 18" Round Lid Hamper, Red Top**



**Product Code:** H41R  
**Category:** [Hampers](#)  
**Brand:** Diversa

**Economy 18" Round Hamper, No Lid**



Economy 18" Round Hamper, No Lid  
 Economy 18" Round Hamper  
 Chrome plated, steel frame • Bag support bars • 3 rubber wheel, ball bearing casters • Shipping weight: 11 lbs. • Box dimensions: 36"x20"x5" diameter height 19" 35"  
**Product Code:** H48  
**Category:** [Hampers](#)  
**Brand:** Diversa

**Triangular Hamper w/Lid, White & Red Powder Coated, ---White Lid**



Triangular Hamper w/Lid, White & Red Powder Coated  
 18" Triangular Hamper with Lid • Ultra-durable, white, powder-coated finish • Space saver, triangular design • Foot-operated, tilt lid with bumper • Base bumper guards for wall protection • Easy-to-use, extra wide, chrome foot peddle • Solid, heavy gauge shelf keeps bags elevated • 3" easy-roll, swivel, ball bearing casters • Rigid construction with all-welded base and top frame • Accommodates 18" diameter bags • KD design saves on shipping costs • Weight: 25 lbs. • Box dimensions: 22"x23"x7" diameter height 18" 32" Freight Included!  
**Product Code:** H43  
**Category:** [Hampers](#)  
**Brand:** Diversa

**Triangular Hamper w/Lid, White & Red Powder Coated, ---White Lid - Triangular Hamper w/Red Top**



Triangular Hamper w/Red Top  
**Product Code:** H43R  
**Category:** [Hampers](#)  
**Brand:** Diversa

**Stainless Steel Triangular Hamper w/Lid**



Stainless Steel Triangular Hamper w/Lid  
 18" Stainless Steel Triangular Hamper with Lid\*  
 • All stainless steel construction  
 • Space saver, triangular design  
 • Foot-operated, tilt lid with bumper  
 • Base bumper guards for wall protection  
 • Easy-to-use, extra wide, foot peddle  
 • Solid, heavy gauge shelf keeps bags elevated  
 • 3" easy-roll, swivel, ball bearing casters  
 • Rigid construction with all-welded base and top frames  
 • Accommodates 18" diameter bags  
 • KD design saves on shipping costs  
 • Weight: 25 lbs.  
 • Box dimensions: 22"x23"x7"  
 HS-54\*  
 HS-54R same as HS-54 with red lid  
 diameter height 18"  
 32" Freight Included!  
**Product Code:** H54  
**Category:** [Hampers](#)  
**Brand:** Diversa

**Stainless Steel Triangular Hamper w/Lid - Stainless Steel Triangular Hamper w/Red Top Lid**



**Product Code:** H54R  
**Category:** [Hampers](#)  
**Brand:** Diversa

### Folding Hamper, Adjustable



Folding Hamper, Adjustable  
Adjustable Folding Hamper• Chrome plated, steel frame• Adjusts to fit 18", 22" or 25" bags• Folds for compact storage• All-steel bag rest chrome plated• Four, 3" rubber wheel, ball bearing casters• Weight: 15 lbs. • Box dimensions: length width height  
21"x40"x3" 193/4" 193/4" 42"  
**Product Code:** H42  
**Category:** [Hampers](#)  
**Brand:** Diversa

### Hamper Bags 18" & 25" Drawstring----18" Bag



Hamper Bags 18" & 25" Drawstring  
18" Drawstring Style Cloth Hamper Bag •  
Weight: 2 lbs. • Box dimensions:  
11"x11"x5" 25" Drawstring Style Cloth  
Hamper Bag • Weight: 2 lbs. • Box  
dimensions: 11"x11"x5"  
**Product Code:** H18  
**Category:** [Hampers](#)  
**Brand:** Diversa

### Hamper Bags 18" & 25" Drawstring----18" Bag - 25" Hamper Bag

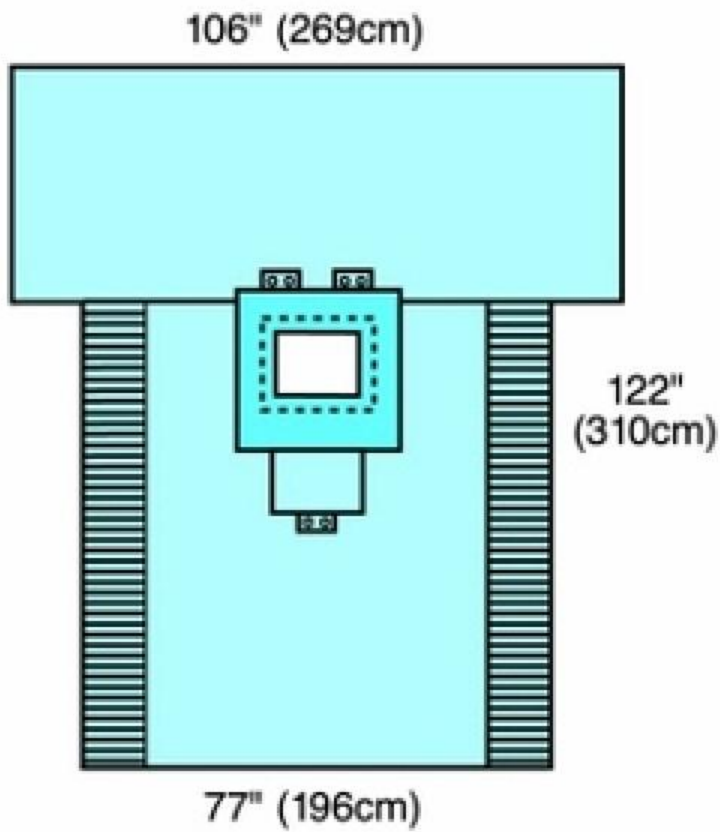


**Product Code:** H25  
**Category:** [Hampers](#)  
**Brand:** Diversa

**Surgical Equipment > Patient Drapes & Surgical Packs** [View](#)

[Chest/Breast Surgical Drape 77" x 102", Sterile, 12/cs](#)





Cardinal Chest/Breast Surgical Drape  
 77" x 102", Sterile, 12/cs Shipping  
 Included  
**Product Code:** 29420  
**Category:** [Patient Drapes & Surgical  
 Packs](#)  
**Brand:** Diversa

**Drape Sheet 2-Ply, White, 40" x 48", 100/cs**



Graham Drape Sheet 2-Ply, White, 40"  
 x 48", 100/cs  
**Product Code:** 300  
**Category:** [Patient Drapes & Surgical  
 Packs](#)  
**Brand:** Diversa

**Seascape Drape 40"x48", 100/cs Poly/Tissue**



Seascape Drape 40"x48", 100/cs

Poly/Tissue

**Product Code:** 325

**Category:** Patient Drapes & Surgical Packs

**Brand:** Diversa

### Sterile Drape/Towel 18" x 26", 50/Bx



Dynarex 18"x26" Sterile Drape/Towel, 50/bx

**Product Code:** 4410

**Category:** Patient Drapes & Surgical Packs

**Brand:** Diversa

### Drape Sheet, 2-Ply, 40x48 Blue, 100/cs



Drape Sheet, 2-Ply, 40" x 48" Blue,  
100/cs Soft and breathable Provides  
patient protection and privacy during  
any type of personal exam

**Product Code:** 8122

**Category:** Patient Drapes & Surgical  
Packs

**Brand:** Diversa

### Surg Pack w/ Drape 50" x 90" 10/Cs



Eclipse Surgical Pack with  
Drape Eclipse Reinforced Table Cover,  
50"x90", Mayo Stand Cover, 24"x53",  
Suture bag (paper), & 3/4 Drape Sheet,  
53"x77", 10/CSShipping Included

**Product Code:** 1005

**Category:** Patient Drapes & Surgical  
Packs

**Brand:** Diversa

### Drape Sheet 2-Ply, White, 40" x 48", 100/cs



Drape Sheet 2-Ply, White, 40" x 48",  
100/cs Shipping Included

**Product Code:** 23339

**Category:** [Patient Drapes & Surgical Packs](#)

**Brand:** Diversa

**Drape Sheet 2-Ply, White, 40" x 72", 50/cs**



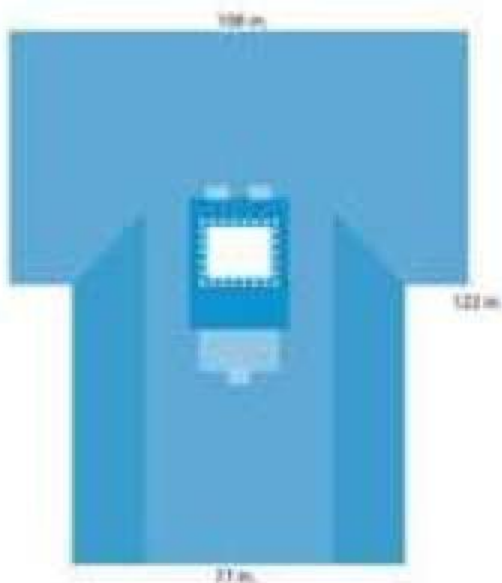
Drape Sheet 2-Ply, White, 40" x 72",  
50/cs Shipping Included

**Product Code:** 24339B

**Category:** [Patient Drapes & Surgical Packs](#)

**Brand:** Diversa

**Tiburon® chest/breast drape 77" x 102", EA**



- Absorbent, impervious reinforcement, 22 x 30 in.
- Armboard covers
- Cord holding tabs
- Fenestration, 14 x 11 in.
- Instrument pad

Tiburon® chest/breast drape Absorbent  
impervious reinforcement, 25 1/2" x  
26" Fenestration, 14" x 11" Instrument  
pad Armboard covers Cord-holding  
tabs REINF ARMBOARD COVERS  
TUBE HOLDER ADH STRIP  
FENESTR

**Product Code:** 29420-2

**Category:** [Patient Drapes & Surgical Packs](#)

**Brand:** Diversa

## Utility Drape w/Tape 15" X 26", 2/Pk, 100Pk/Cs



Our standard drape collection features a top-of-the-line SMS fabric, composed of five strong fiber layers for exceptionally high barrier strength. Made of 100% polypropylene, SMS drapes are soft and drapeable. Composed with the latest generation SMS technology, Medline SMS drapes have smaller fibers and a more uniform fiber lay-down.

**Product Code:** 2405

**Category:** [Patient Drapes & Surgical Packs](#)

**Brand:** Diversa