

## Disability Products/Equipment > Homecare Beds [View](#)

### Patriot Homecare Bed Full Electric



Introducing the new **Patriot Full-Electric Homecare Bed** with a **GRID SLEEP SURFACE!** Designed and engineered by the same team who develop the GF Long Term Care beds. Sleep surface is **MADE IN THE USA!**

The single-motor design homecare bed is now available in a full-electric/ low version. The Patriot Full-Electric Homecare Bed offers the same features as the Patriot Semi-Electric Homecare Bed with the additional feature of electric height adjustment.

**Product Code:** Patriot Full-Electric

**Category:** [Homecare Beds](#)

**Brand:** Diversa

### Patriot Homecare Bed Semi- Electric



Introducing the new **Patriot Semi-Electric Homecare Bed** with a **GRID SLEEP SURFACE!** Designed and engineered by the same team who develop the GF Long Term Care beds. Sleep surface is **MADE IN THE USA!**

The Patriot Full-Electric Homecare Bed offers the same features as the Patriot Semi-Electric Homecare Bed with the additional feature of electric height adjustment.

**Product Code:** Patriot Semi-Electric

**Category:** [Homecare Beds](#)

**Brand:** Diversa

### Patriot LX Full Electric Home Care Bed



**Patriot LX Full Electric Home Care Bed** offers the ability to raise and lower the sleep surface while also being able to have your head and shoulders raised and your knees bent or you can lay flat.

**Shipping Additional!**

**Installation Available!**

**Product Code:** Patriot LX Full

**Category:** [Homecare Beds](#)

**Brand:** Diversa

## Disability Products/Equipment > Stair Chairs [View](#)

### Horizon Stair Lift Chair



The Horizon Stair Lift Chair is designed for ease-of-use and fast hassle free installation. The Horizon Stairlift will make difficult staircases accessible again and allow more freedom in your home.

For Straight Staircases.

Installation Available!

**Product Code:** Horizon Standard

**Category:** [Stair Chairs](#)

**Brand:** Diversa

### Rubex AC Stair Lift



The **Rubex AC Stair Lift** is built for safety and ease of use with every aspect of your safety in mind. Safety sensors are built into the footrest include a locking mechanism into the safety belt, and give the motor instant reversing capability. The unit comes with automatic limits at the end of the track, standard electrical and mechanical slack safety devices, and a fail-safe mechanism that prevents operation until the seat is in the correct position.

**Installation Available!**

**Product Code:** Rubex

**Category:** [Stair Chairs](#)

**Brand:** Diversa

### [Platinum Curved Stair Lift Chair Standard](#)



The **Platinum Curves Stair Lift Chair** can be custom designed to fit virtually almost any type of staircase. Now all multi-level home owners can make their stairs handicap accessible without the use of elevators or vertical platform lifts. Whether you have multiple landings, a spiral staircase, 90-degree corners, 180-degree turns, or any other design challenges, a solution can be crafted to address your specific needs.

**Installation Available!**

**Shipping Additional!**

**Product Code:** Platinum Curve Standard

**Category:** [Stair Chairs](#)

**Brand:** Diversa

## [Disability Products/Equipment > Walk-in Bathtubs & Showers](#) [View](#)

### [Sanctuary Walk-in Tub](#)



The **Sanctuary Walk-In Tub** is available in 4 sizes with 6.25" step and 17" seat height for those with limited mobility. The spacious and convenient tub features with a 17" high seat will allow you to relax while fully submerged and will eliminate the difficulty of having to get up from a reclined position.

**Installation Available!**

**Shipping Additional.**

**If you do not see what you are looking for, please ask, we have many styles and models of Walk-In Tubs available!**

**Product Code:** Sanctuary

**Category:** [Walk-in Bathtubs & Showers](#)

**Brand:** Diversa

### [Sanctuary Deep Water Walk-In Tub](#)



The **Sanctuary Deep Water Walk-In Tub** provides extra inches to the soaking depth over other models. Typical tub heights are 36"- 40", but the deep water tub offers 46.5" of height so that you can fully immerse yourself in the tub.

**Installation Available!**

**Shipping Additional.**

**Product Code:** Sanctuary Deep Water

**Category:** [Walk-in Bathtubs & Showers](#)

**Brand:** Diversa

### [Sanctuary Large Wheelchair Access Access Tub](#)



The **Sanctuary Large Wheelchair Access Tub** comes in both medium and large sizes. They come with a large outward swinging door for complete access to the tubs seating, making transfers from wheelchairs, hoist lifts, and other transfer devices a breeze. Unlike the Medium Wheelchair Access Tub, the Large Wheelchair Tub is enclosed on the front and sides, giving you more installation options.

**Installation Available!**

**Shipping Additional**

**Product Code:** Sanctuary Wheelchair

**Category:** [Walk-in Bathtubs & Showers](#)

**Brand:** Diversa

### [Sanctuary Medium Shower Enclosure Walk In Tub](#)



The Sanctuary Shower Walk In Tubs are available in both small and medium sizes. This unique options allows a user to enjoy either a shower or a bath. With a 6.5" step, this walk-in tub is easy for those with limited mobility to enter,

This model requires framed walls on all enclosed sides.

**Installation Available!**

**Shipping Additional**

**Product Code:** Shower Enclosure

**Category:** [Walk-in Bathtubs & Showers](#)

**Brand:** Diversa

## [Disability Products/Equipment > Scooters & Powered Wheelchairs](#)

[View](#)

### [Spitfire EX2 4 Wheel Travel Scooter](#)



**Spitfire EX2 4 Wheel Travel Scooter** with 12AH Battery.

Maximum range of 9-15 miles. Speed 5mph.

**Product Code:** Spitfire EX2

**Category:** [Scooters & Powered Wheelchairs](#)

**Brand:** Diversa

### [Spitfire DST 4 Wheel Travel Scooter](#)



**Spitfire DST 4 Wheel Travel Scooter 20AH**, estimated range 15 miles. 325 lb capacity.

**Product Code:** Spitfire DST 4 Wheel

**Category:** [Scooters & Powered Wheelchairs](#)

**Brand:** Diversa

### King Cobra PGV Executive Scooter



**King Cobra PGV Executive Scooter**, 75AH battery, 35 mile range. 10 mph limit. Personal golf vehicle with hard canopy top. 425 lb capacity.

**Product Code:** King Cobra PGV

**Category:** [Scooters & Powered Wheelchairs](#)

**Brand:** Diversa

### Panther Heavy Duty 4 Wheel Scooter



**Panther Heavy Duty 4 Wheel Scooter**, estimated range 25 miles, 8 mph. 425 lb weight capacity.

**Product Code:** Panther HD 4 Wheel Scoote

**Category:** [Scooters & Powered Wheelchairs](#)

**Brand:** Diversa

### Phoenix HD 4



**Phoenix Heavy Duty 4**, 20AH, 15 mile range, 4 mph. 350 lb weight capacity.

**Product Code:** Phoenix HD

**Category:** [Scooters & Powered Wheelchairs](#)

**Brand:** Diversa

## Simulation/Models > Airway Management [View](#)

### Tracheostomy Care Sim



**Product Code:** LF01083U

**Category:** [Airway Management](#)

**Brand:** Diversa

### Infant Airway Mgmt. Head



**Product Code:** LF03621UG  
**Category:** [Airway Management](#)  
**Brand:** Diversa

### Infant Airway Mgmt w/ Stand



**Product Code:** LF03623UG  
**Category:** [Airway Management](#)  
**Brand:** Diversa

### ?Airway Larry? Mgmt Trainer



**Product Code:** LF03667UG  
**Category:** [Airway Management](#)  
**Brand:** Diversa

### ?Airway Larry" w/ Stand



**Product Code:** LF03699UG  
**Category:** [Airway Management](#)  
**Brand:** Diversa

## Simulation/Models > Specialty Simulators [View](#)

### Ostomy Care Simulator



**Product Code:** LF00906UG  
**Category:** Specialty Simulators  
**Brand:** Diversa

### CAPD Simulator



**Product Code:** LF01027U  
**Category:** Specialty Simulators  
**Brand:** Diversa

### Cath Ed 1 & 2 Set



**Product Code:** LF01029U  
**Category:** Specialty Simulators  
**Brand:** Diversa

### Intraosseous Infusion Sim



**Product Code:** LF01108U  
**Category:** Specialty Simulators  
**Brand:** Diversa

### Pericardiocentesis Sim



**Product Code:** LF03769UG  
**Category:** Specialty Simulators  
**Brand:** Diversa

### Nasco Cleaner



**Product Code:** LF09919U  
**Category:** [Specialty Simulators](#)  
**Brand:** Diversa

### SimScope Hybrid Simulator<sup>®</sup>,<sup>ç</sup>



**Product Code:** 2784  
**Category:** [Specialty Simulators](#)  
**Brand:** Diversa

## Simulation/Models > Suture & Stapler Simulators [View](#)

### Suture Practice Arm



**Product Code:** LF01028U  
**Category:** [Suture & Stapler Simulators](#)  
**Brand:** Diversa

### Suture/Staple Practice



**Product Code:** LF01031U  
**Category:** [Suture & Stapler Simulators](#)  
**Brand:** Diversa

### Suture Kit-White



**Product Code:** LF01042U  
**Category:** [Suture & Stapler Simulators](#)  
**Brand:** Diversa

## Suture Kit-Black



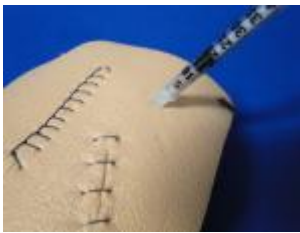
**Product Code:** LF01057U  
**Category:** [Suture & Stapler Simulators](#)  
**Brand:** Diversa

## Flat Skin Pad For Suturing, Stapling, & Punching, EA



**Product Code:** SB50118U  
**Category:** [Suture & Stapler Simulators](#)  
**Brand:** Diversa

## TSkin Flat Skin Pad For Suturing, Stapling, & Punching, EA



**Product Code:** TS Skin  
**Category:** [Suture & Stapler Simulators](#)  
**Brand:** Diversa

## Simulation/Models > CPR Simulators [View](#)

### Basic Buddy? CPR Manikin



**Product Code:** LF03693U  
**Category:** [CPR Simulators](#)  
**Brand:** Diversa

### Basic Buddy? CPR 5-Pack



**Product Code:** LF03694U  
**Category:** [CPR Simulators](#)  
**Brand:** Diversa

### Basic Buddy? CPR Lung Bags





**Product Code:** LF03696U  
**Category:** [CPR Simulators](#)  
**Brand:** Diversa

### Basic Buddy? Carry Bag



**Product Code:** LF03697U  
**Category:** [CPR Simulators](#)  
**Brand:** Diversa

### CPARLENE? w/ Electronics



**Product Code:** LF03713U  
**Category:** [CPR Simulators](#)  
**Brand:** Diversa

### CPARLENE? Torso



**Product Code:** LF03715U  
**Category:** [CPR Simulators](#)  
**Brand:** Diversa

### Baby Buddy? CPR Manikin



**Product Code:** LF03720  
**Category:** [CPR Simulators](#)  
**Brand:** Diversa

### Baby Buddy? CPR 5-Pack



**Product Code:** LF03721  
**Category:** [CPR Simulators](#)  
**Brand:** Diversa

### Baby Buddy? Manikin Bags



**Product Code:** LF03723  
**Category:** [CPR Simulators](#)  
**Brand:** Diversa

## Simulation/Models > Basic Examination Simulators [View](#)

### Blood Pressure Cuff Assembly



**Product Code:** 200-00550  
**Category:** [Basic Examination Simulators](#)  
**Brand:** Diversa

### Prostate Exam Simulator



**Product Code:** LF00901UG  
**Category:** [Basic Examination Simulators](#)  
**Brand:** Diversa

### Non-Pitting Edema Trainer



**Product Code:** LF00946U  
**Category:** [Basic Examination Simulators](#)  
**Brand:** Diversa

### Pitting Edema Trainer



**Product Code:** LF00947U  
**Category:** [Basic Examination Simulators](#)  
**Brand:** Diversa

### Advanced Breast Exam Sim.



**Product Code:** LF00980UG  
**Category:** [Basic Examination Simulators](#)  
**Brand:** Diversa

### Ear Exam Simulator



**Product Code:** LF01019U  
**Category:** [Basic Examination Simulators](#)  
**Brand:** Diversa

### Sigmoid Exam Sim



**Product Code:** LF01084U  
**Category:** [Basic Examination Simulators](#)  
**Brand:** Diversa

### Deluxe Blood Pressure Sim



**Product Code:** LF01129U  
**Category:** [Basic Examination Simulators](#)  
**Brand:** Diversa

### Auscultation Trainer /Smartscope?



**Product Code:** LF01142UG  
**Category:** [Basic Examination Simulators](#)  
**Brand:** Diversa

### Anatomical Breast



**Product Code:** SB13139U  
**Category:** [Basic Examination Simulators](#)  
**Brand:** Diversa

### Testicle Model



**Product Code:** SB41580U  
**Category:** [Basic Examination Simulators](#)  
**Brand:** Diversa

### BSE Trainer



**Product Code:** SB43000G  
**Category:** [Basic Examination Simulators](#)  
**Brand:** Diversa

### Breast Palpation Trainer



**Product Code:** SB43106U  
**Category:** [Basic Examination Simulators](#)  
**Brand:** Diversa

## Simulation/Models > General Training Aids [View](#)

### Snellen Plastic Eye Chart



**Product Code:** 1240  
**Category:** [General Training Aids](#)  
**Brand:** Diversa

### Human Skeleton w/ Stand



**Product Code:** LA00101U  
**Category:** [General Training Aids](#)  
**Brand:** Diversa

### Scientific? Unisex Torso



**Product Code:** SB41420U  
**Category:** [General Training Aids](#)  
**Brand:** Diversa

### Torso w/ Neck, Back



**Product Code:** SB41421U  
**Category:** [General Training Aids](#)  
**Brand:** Diversa

### Classic Unisex Torso



**Product Code:** SB41506U  
**Category:** [General Training Aids](#)  
**Brand:** Diversa

### Chart for Blood Vessels/Nerves



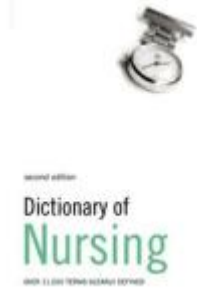
**Product Code:** SB41520U  
**Category:** [General Training Aids](#)  
**Brand:** Diversa

### Skeleton Dust Cover



**Product Code:** SB45480U  
**Category:** [General Training Aids](#)  
**Brand:** Diversa

### Dictionary of Nursing



**Product Code:** SB47338U  
**Category:** [General Training Aids](#)  
**Brand:** Diversa

### 5-lb Body Fat Replica



**Product Code:** WA04313U  
**Category:** [General Training Aids](#)  
**Brand:** Diversa

### 1-lb / 5-lb Fat Replicas



**Product Code:** WA14574U  
**Category:** [General Training Aids](#)  
**Brand:** Diversa

### Dual-Sex Muscle Torso



**Product Code:** SB41423U-2  
**Category:** [General Training Aids](#)  
**Brand:** Diversa

### Nasco™s Heart & Lung Sites Visual Aids Poster Set



**Product Code:** LF00683U  
**Category:** [General Training Aids](#)  
**Brand:** Diversa

## Simulation/Models > Wound Treatment [View](#)

### Male Wound Care Assessment Set



**Product Code:** 300-01050  
**Category:** [Wound Treatment](#)  
**Brand:** Diversa

### Wound Care Assessment Set (Female)



**Product Code:** 325-00550  
**Category:** [Wound Treatment](#)  
**Brand:** Diversa

### Nasco Cleaner



**Product Code:** LF09919U  
**Category:** [Wound Treatment](#)  
**Brand:** Diversa

### Bedsore Cleansing and Dressing Model



**Product Code:** SB14941U  
**Category:** [Wound Treatment](#)  
**Brand:** Diversa

### Basic Casualty Sim Kit



**Product Code:** SB30995U  
**Category:** [Wound Treatment](#)  
**Brand:** Diversa

### Decubitus Wound Care



**Product Code:** SB46502U  
**Category:** [Wound Treatment](#)  
**Brand:** Diversa

### Wound Kit for GERi?/KERi?



**Product Code:** SB48077UG  
**Category:** [Wound Treatment](#)  
**Brand:** Diversa

### Life/form® Elderly Pressure Ulcer Foot Black



**Product Code:** LF00944U  
**Category:** [Wound Treatment](#)  
**Brand:** Diversa

## Simulation/Models > Male/Female Simulators [View](#)

### Male Cath. Simulator



**Product Code:** LF00855U  
**Category:** [Male/Female Simulators](#)  
**Brand:** Diversa



## Female Cath. Simulator



**Product Code:** LF00856U  
**Category:** [Male/Female Simulators](#)  
**Brand:** Diversa

## Male/Female Cath. Sim. Set



**Product Code:** LF00857U  
**Category:** [Male/Female Simulators](#)  
**Brand:** Diversa

## Prostate Exam Simulator



**Product Code:** LF00901UG  
**Category:** [Male/Female Simulators](#)  
**Brand:** Diversa

## Advanced Breast Exam Sim.



**Product Code:** LF00980UG  
**Category:** [Male/Female Simulators](#)  
**Brand:** Diversa

## Nasco Cleaner



**Product Code:** LF09919U  
**Category:** [Male/Female Simulators](#)  
**Brand:** Diversa

## Anatomical Breast



**Product Code:** SB13139U  
**Category:** [Male/Female Simulators](#)  
**Brand:** Diversa

### Male and Female Cath Sim



**Product Code:** SB28919U  
**Category:** [Male/Female Simulators](#)  
**Brand:** Diversa

### Testicle Model



**Product Code:** SB41580U  
**Category:** [Male/Female Simulators](#)  
**Brand:** Diversa

### BSE Trainer



**Product Code:** SB43000G  
**Category:** [Male/Female Simulators](#)  
**Brand:** Diversa

### Breast Palpatation Trainer



**Product Code:** SB43106U  
**Category:** [Male/Female Simulators](#)  
**Brand:** Diversa

### Dual-Sex Muscle Torso



**Product Code:** SB41423U  
**Category:** [Male/Female Simulators](#)  
**Brand:** Diversa

## Simulation/Models > Pediatric/Neonatal Simulators [View](#)

### SimPad System



**Product Code:** 200-30001  
**Category:** [Pediatric/Neonatal Simulators](#)  
**Brand:** Diversa

### Nursing Kid (SimPad Capable)



**Product Code:** 350-05050  
**Category:** [Pediatric/Neonatal Simulators](#)  
**Brand:** Diversa

### Nursing Baby (SimPad Capable)



**Product Code:** 365-05050  
**Category:** [Pediatric/Neonatal Simulators](#)  
**Brand:** Diversa

### Pediatric IV & Inj Arm



**Product Code:** LF00958UG  
**Category:** [Pediatric/Neonatal Simulators](#)  
**Brand:** Diversa

### Birthing Station Sim



**Product Code:** LF01070UG  
**Category:** [Pediatric/Neonatal Simulators](#)  
**Brand:** Diversa

### Micro-Preemie Simulator



**Product Code:** LF01206UG  
**Category:** [Pediatric/Neonatal Simulators](#)  
**Brand:** Diversa

### Child CRiSis? Manikin



**Product Code:** LF03616UG  
**Category:** [Pediatric/Neonatal Simulators](#)  
**Brand:** Diversa

### Deluxe Child CRiSis? w/ ECG Sim



**Product Code:** LF03617UG  
**Category:** [Pediatric/Neonatal Simulators](#)  
**Brand:** Diversa

### Infant Airway Mgmt. Head



**Product Code:** LF03621UG  
**Category:** [Pediatric/Neonatal Simulators](#)  
**Brand:** Diversa

### Infant Airway Mgmt w/ Stand



**Product Code:** LF03623UG  
**Category:** [Pediatric/Neonatal Simulators](#)  
**Brand:** Diversa

### Int. Infant CRiSis? Manikin



**Product Code:** LF03700UG  
**Category:** [Pediatric/Neonatal Simulators](#)  
**Brand:** Diversa

### Complete Infant CRiSis? Manikin



**Product Code:** LF03709UG  
**Category:** [Pediatric/Neonatal Simulators](#)  
**Brand:** Diversa

### Deluxe Complete Infant Manikin



**Product Code:** LF03718UG  
**Category:** [Pediatric/Neonatal Simulators](#)  
**Brand:** Diversa

### Baby Buddy? CPR Manikin



**Product Code:** LF03720  
**Category:** [Pediatric/Neonatal Simulators](#)  
**Brand:** Diversa

### Baby Buddy? CPR 5-Pack



**Product Code:** LF03721  
**Category:** [Pediatric/Neonatal Simulators](#)  
**Brand:** Diversa

### Baby Buddy? Manikin Bags



**Product Code:** LF03723  
**Category:** [Pediatric/Neonatal Simulators](#)  
**Brand:** Diversa

### Nursing Baby Non-Sim?



**Product Code:** LG2057U  
**Category:** [Pediatric/Neonatal Simulators](#)  
**Brand:** Diversa

### Advanced Childbirth Simulator



**Product Code:** SB22438U  
**Category:** [Pediatric/Neonatal Simulators](#)  
**Brand:** Diversa

### Obstetrical Manikin



**Product Code:** SB23536U  
**Category:** [Pediatric/Neonatal Simulators](#)  
**Brand:** Diversa

### Maternal/Neonate Birth Sim



**Product Code:** SB37713U  
**Category:** [Pediatric/Neonatal Simulators](#)  
**Brand:** Diversa

### NOELLE? Birthing Torso



**Product Code:** SB37714UG  
**Category:** [Pediatric/Neonatal Simulators](#)  
**Brand:** Diversa

### Total Childbirth Ed Station



**Product Code:** SB38758UG  
**Category:** [Pediatric/Neonatal Simulators](#)  
**Brand:** Diversa

### Simulaids STAT Baby



**Product Code:** SB41171UG  
**Category:** [Pediatric/Neonatal Simulators](#)  
**Brand:** Diversa

### Maternal/Neonatal Birth Sim



**Product Code:** SB48757U  
**Category:** [Pediatric/Neonatal Simulators](#)  
**Brand:** Diversa

### NOELLE Maternal & Neonatal Birthing Simulator



**Product Code:** 2785  
**Category:** Pediatric/Neonatal Simulators  
**Brand:** Diversa

### Newborn Baby Doll, Males & Females, Asian, White, Brown--Asian M



**Product Code:** SB26943U  
**Category:** Pediatric/Neonatal Simulators  
**Brand:** Diversa

### Newborn Baby Doll, Males & Females, Asian, White, Brown--Asian M - Newborn Baby Doll Asian Female



**Product Code:** SB26944U  
**Category:** Pediatric/Neonatal Simulators  
**Brand:** Diversa

### Newborn Baby Doll, Males & Females, Asian, White, Brown--Asian M - Newborn Baby Doll White Female



**Product Code:** SB17157U  
**Category:** Pediatric/Neonatal Simulators  
**Brand:** Diversa

### Newborn Baby Doll, Males & Females, Asian, White, Brown--Asian M - Newborn Baby Doll White Male



**Product Code:** SB17156U  
**Category:** Pediatric/Neonatal Simulators  
**Brand:** Diversa



## Newborn Baby Doll, Males & Females, Asian, White, Brown--Asian M - Newborn Baby Doll Brown Female



**Product Code:** SB17159U  
**Category:** [Pediatric/Neonatal Simulators](#)  
**Brand:** Diversa

## Newborn Baby Doll, Males & Females, Asian, White, Brown--Asian M - Newborn Baby Doll Brown Male



**Product Code:** SB17158U  
**Category:** [Pediatric/Neonatal Simulators](#)  
**Brand:** Diversa

## Maternal Birthing Sim



**Product Code:** SB48760U  
**Category:** [Pediatric/Neonatal Simulators](#)  
**Brand:** Diversa

## Simulation/Models > Venipuncture/Injection Simulators [View](#)

### Arterial Arm Stick (Arm Only)



**Product Code:** 375-81001  
**Category:** [Venipuncture/Injection Simulators](#)  
**Brand:** Diversa

### Intramuscular Injection Sites Poster



**Product Code:** LF00695U  
**Category:** [Venipuncture/Injection Simulators](#)  
**Brand:** Diversa

### Adult Venipuncture/INJ Arm



**Product Code:** LF00698UG  
**Category:** [Venipuncture/Injection Simulators](#)  
**Brand:** Diversa

### Pediatric IV & Inj Arm



**Product Code:** LF00958UG  
**Category:** [Venipuncture/Injection Simulators](#)  
**Brand:** Diversa

### Intramuscular Inj Sim



**Product Code:** LF00961U  
**Category:** [Venipuncture/Injection Simulators](#)  
**Brand:** Diversa

### Venip./Inj Arm Replace Kit



**Product Code:** LF00966U  
**Category:** [Venipuncture/Injection Simulators](#)  
**Brand:** Diversa

### Veni/Inj Arm-Black



**Product Code:** LF00997U  
**Category:** [Venipuncture/Injection Simulators](#)  
**Brand:** Diversa

### Fluid Supply Stand



**Product Code:** LF01022U  
**Category:** [Venipuncture/Injection Simulators](#)  
**Brand:** Diversa

### Adv Venip/Inj Arm - White



**Product Code:** LF01121U  
**Category:** [Venipuncture/Injection Simulators](#)  
**Brand:** Diversa

### Adv Venip/Inj Arm - Black



**Product Code:** LF01126U  
**Category:** [Venipuncture/Injection Simulators](#)  
**Brand:** Diversa

### Venip/Inj Demo Arm - White



**Product Code:** LF01131U  
**Category:** [Venipuncture/Injection Simulators](#)  
**Brand:** Diversa

### Venip/Inj Demo Arm - Black



**Product Code:** LF01132U  
**Category:** [Venipuncture/Injection Simulators](#)  
**Brand:** Diversa

### Advanced IV Hand



**Product Code:** LF01139UG  
**Category:** [Venipuncture/Injection Simulators](#)  
**Brand:** Diversa

### Venatech IM & SubQ Simulator



**Product Code:** LF01184UG  
**Category:** [Venipuncture/Injection Simulators](#)  
**Brand:** Diversa

### Venous Cannulation Sim



**Product Code:** LF01087UG  
**Category:** [Venipuncture/Injection Simulators](#)  
**Brand:** Diversa

### Nasco Cleaner



**Product Code:** LF09919U  
**Category:** [Venipuncture/Injection Simulators](#)  
**Brand:** Diversa

### Chester Chest?



**Product Code:** SB18636UG  
**Category:** [Venipuncture/Injection Simulators](#)  
**Brand:** Diversa

### Venous Training Arm



**Product Code:** SB23444U  
**Category:** [Venipuncture/Injection Simulators](#)  
**Brand:** Diversa

### Injection Teaching Model



**Product Code:** S23496U  
**Category:** [Venipuncture/Injection Simulators](#)  
**Brand:** Diversa

### IV Lower Arm w/ Hand



**Product Code:** SB23533U  
**Category:** [Venipuncture/Injection Simulators](#)  
**Brand:** Diversa

### Arterial/Venous Training Arm



**Product Code:** SB26040UG  
**Category:** [Venipuncture/Injection Simulators](#)  
**Brand:** Diversa

### IV Training Arm/Hand Set



**Product Code:** SB32220U  
**Category:** [Venipuncture/Injection Simulators](#)  
**Brand:** Diversa

### Chart for Blood Vessels/Nerves



**Product Code:** SB41520U  
**Category:** [Venipuncture/Injection Simulators](#)  
**Brand:** Diversa

### Blood Reservoir Bag



**Product Code:** SB46515UG  
**Category:** [Venipuncture/Injection Simulators](#)  
**Brand:** Diversa

### Diabetic Injection Pad



**Product Code:** WA18238U  
**Category:** [Venipuncture/Injection Simulators](#)  
**Brand:** Diversa

### Life/form® Portable IV Arm Trainer White - Life/form® Portable IV Arm Trainer - Black



**Product Code:** LF00704U-3  
**Category:** [Venipuncture/Injection Simulators](#)  
**Brand:** Diversa

### Portable IV Arm Available in White & Black---White Arm - Portable IV Arm Black Arm



**Product Code:** LF00704U-2  
**Category:** [Venipuncture/Injection Simulators](#)  
**Brand:** Diversa

### Chester Chest? Adv Arm



**Product Code:** SB45082U  
**Category:** [Venipuncture/Injection Simulators](#)  
**Brand:** Diversa

### Life/form® Portable IV Arm Trainer White



**Product Code:** LF00701U  
**Category:** [Venipuncture/Injection Simulators](#)  
**Brand:** Diversa

### Portable IV Arm Available in White & Black---White Arm



**Product Code:** LF00701U-2  
**Category:** [Venipuncture/Injection Simulators](#)  
**Brand:** Diversa

## Simulation/Models > Full Body Manikins [View](#)

### SimPad System



**Product Code:** 200-30001  
**Category:** [Full Body Manikins](#)  
**Brand:** Diversa

### Patient Kelly Manikin



**Product Code:** 300-00001  
**Category:** [Full Body Manikins](#)  
**Brand:** Diversa

### Nursing Kelly, SimPad capable



**Product Code:** 300-05050  
**Category:** [Full Body Manikins](#)  
**Brand:** Diversa

### Nursing Anne (SimPad Capable)



**Product Code:** 325-05050  
**Category:** [Full Body Manikins](#)  
**Brand:** Diversa

### Nursing Kid (SimPad Capable)



**Product Code:** 350-05050  
**Category:** [Full Body Manikins](#)  
**Brand:** Diversa

### Nursing Baby (SimPad Capable)



**Product Code:** 365-05050  
**Category:** [Full Body Manikins](#)  
**Brand:** Diversa

### Child CRiSis? Manikin



**Product Code:** LF03616UG  
**Category:** [Full Body Manikins](#)  
**Brand:** Diversa

### Deluxe Child CRiSis? w/ ECG Sim



**Product Code:** LF03617UG  
**Category:** [Full Body Manikins](#)  
**Brand:** Diversa

### Deluxe Complete Infant Manikin





**Product Code:** LF03718UG  
**Category:** Full Body Manikins  
**Brand:** Diversa

### Baby Buddy? CPR Manikin



**Product Code:** LF03720  
**Category:** Full Body Manikins  
**Brand:** Diversa

### Baby Buddy? CPR 5-Pack



**Product Code:** LF03721  
**Category:** Full Body Manikins  
**Brand:** Diversa

### Baby Buddy? Manikin Bags



**Product Code:** LF03723  
**Category:** Full Body Manikins  
**Brand:** Diversa

### Life/form? Chest Tube Manikin



**Product Code:** LF03770U  
**Category:** Full Body Manikins  
**Brand:** Diversa

### Complete CRiSis? Manikin



**Product Code:** LF03952UG  
**Category:** Full Body Manikins  
**Brand:** Diversa

### Deluxe CRiSis? Manikin



**Product Code:** LF03955UG  
**Category:** Full Body Manikins  
**Brand:** Diversa

### Life/form? Adult CRiSis? Auscultation Manikin



**Product Code:** LF03965UG  
**Category:** Full Body Manikins  
**Brand:** Diversa

### Life/form? Adult CRiSis? Auscultation Manikin with ECG Simulator



**Product Code:** LF03966UG  
**Category:** Full Body Manikins  
**Brand:** Diversa

### Deluxe Plus Auscultation Man.



**Product Code:** LF03968UG  
**Category:** Full Body Manikins  
**Brand:** Diversa

### Complete Infant CRiSis? Manikin



**Product Code:** LF03709UG-2  
**Category:** Full Body Manikins  
**Brand:** Diversa

### Advanced KERi? Manikin



**Product Code:** LF04022UG  
**Category:** Full Body Manikins  
**Brand:** Diversa

### Nasco Cleaner



**Product Code:** LF09919U  
**Category:** Full Body Manikins  
**Brand:** Diversa

### Obstetrical Manikin



**Product Code:** SB23536U  
**Category:** Full Body Manikins  
**Brand:** Diversa

### STAT Manikin



**Product Code:** SB33723UG  
**Category:** Full Body Manikins  
**Brand:** Diversa

### PDA STAT Manikin



**Product Code:** SB36923UG  
**Category:** [Full Body Manikins](#)  
**Brand:** Diversa

### Simulaids STAT Baby



**Product Code:** SB41171UG  
**Category:** [Full Body Manikins](#)  
**Brand:** Diversa

### Nursing Baby Non-Sim?



**Product Code:** LG2057U  
**Category:** [Full Body Manikins](#)  
**Brand:** Diversa

### Deluxe Hospital Training Manikin



**Product Code:** SB20111U  
**Category:** [Full Body Manikins](#)  
**Brand:** Diversa

### Susie? and Simon? Sim



**Product Code:** SB27321UG  
**Category:** [Full Body Manikins](#)  
**Brand:** Diversa

## Laboratory > Eye Protection [View](#)

### Blaze Style Safety Glasses, EA



**Product Code:** 91000  
**Category:** [Eye Protection](#)  
**Brand:** Diversa

### Bradley Safety Goggle. Impact & Splash Resistance, EA



**Product Code:** 22600  
**Category:** [Eye Protection](#)  
**Brand:** Diversa

### Cambridge Goggle, Splash & Impact Resistant, Neoprene Band 12/Cs



**Product Code:** 22521N  
**Category:** [Eye Protection](#)  
**Brand:** Diversa

### Blaze Style Safety Glasses, Black Frame, AF Lens, EA



**Product Code:** 91000-2  
**Category:** [Eye Protection](#)  
**Brand:** Diversa

### Uvex Black Frame Astro Safety Glasses OTG, EA



**Product Code:** S2500  
**Category:** [Eye Protection](#)  
**Brand:** Diversa

### Uvex Astro OTG Patriot Frame



**Product Code:** S2530  
**Category:** [Eye Protection](#)  
**Brand:** Diversa

## Uvex Futura 9301 Goggle, Clear Lens, EA



**Product Code:** S345C  
**Category:** [Eye Protection](#)  
**Brand:** Diversa

## Laboratory > Microscopes [View](#)

### Mi5 Infinity Labscope, Plan Binocular, 4-10-20-40LWD-100x, LED



**Product Code:** M5BO5AiPL3  
**Category:** [Microscopes](#)  
**Brand:** Diversa

### i4 Infinity Semi-Plan Binocular 4 Obj. LED



**Product Code:** Mi4-BN4AiSL3  
**Category:** [Microscopes](#)  
**Brand:** Diversa

### Revelation III Medical Microscope, Binocular, Achromatic, LED



**Product Code:** R#-BN4A-DAL3  
**Category:** [Microscopes](#)  
**Brand:** Diversa

### Revelation III Medical Microscope, Binocular, Achromatic, LED - Revelation III Medical Microscope, Binocular, PLAN, LED



**Product Code:** R3-BN4A-DPL3  
**Category:** [Microscopes](#)  
**Brand:** Diversa

### Cover Glass 22mm x 22mm #1 (0.13-0.18mm), 200/Bx



**Product Code:** 3704  
**Category:** [Microscopes](#)  
**Brand:** Diversa

### Student Pro Microscope, 4 Adj. Coaxial, LED



**Product Code:** EDM-MM4A-DAL3  
**Category:** [Microscopes](#)  
**Brand:** Diversa

### Bristoline Binocular Microscope Semi-Plan Obj.



**Product Code:** BR3002  
**Category:** [Microscopes](#)  
**Brand:** Diversa

### Bristoline Monocular Microscope Semi-Plan



**Product Code:** BR3071  
**Category:** [Microscopes](#)  
**Brand:** Diversa

**Cover Glass 22mm x 22mm #1 (0.13-0.18mm), 200/Bx - Cover Glass 22mm x 22mm #1 (0.17-0.25mm), 200/Bx**



**Product Code:** 3705  
**Category:** [Microscopes](#)  
**Brand:** Diversa

**Microscope Slides 3" x 1", Clear, 144/Bx**



**Product Code:** 3703-2P  
**Category:** [Microscopes](#)  
**Brand:** Diversa

**Bristoline Binocular Microscope, Plan Obj. LED**



**Product Code:** BR3000-LED  
**Category:** [Microscopes](#)  
**Brand:** Diversa

**Microscope Slides 3" x 1", Clear, 144/Bx - Microscope Slides 3" x 1" Frosted, 144/Bx**



**Product Code:** 3703-2F  
**Category:** [Microscopes](#)  
**Brand:** Diversa



## Laboratory > Pipettes [View](#)

### Transfer Pipette, 5.0mL Blood Bank Pipette, 500/Bx



**Product Code:** 137050  
**Category:** [Pipettes](#)  
**Brand:** Diversa

### Transfer Pipette, 3.0mL Small Bulb Pipette, 500/Bx



**Product Code:** 137035  
**Category:** [Pipettes](#)  
**Brand:** Diversa

## Surgical Equipment > Surgical Trays [View](#)

### Minor Single Basin Surgical Tray I, Gowns, 2/Cs



**Product Code:** SO106  
**Category:** [Surgical Trays](#)  
**Brand:** Diversa

### Sterile Basic Double Basin Surgical Tray II



**Product Code:** 06600  
**Category:** [Surgical Trays](#)  
**Brand:** Diversa

## Surgical Equipment > Skin Prep Trays [View](#)

### Kendall Wet Skin Scrub Trays, w/Wing grip Sponge, 20/Cs



**Product Code:** 41589-2  
**Category:** Skin Prep Trays  
**Brand:** Diversa

### Wet Skin Scrub 4 Compartment Tray, 20/CS



**Product Code:** DY70372  
**Category:** Skin Prep Trays  
**Brand:** Diversa

### Wet Skin Scrub Tray, 20/Cs



**Product Code:** DY70760  
**Category:** Skin Prep Trays  
**Brand:** Diversa

## Surgical Equipment > Shave Prep Tray [View](#)

### Shave Prep Tray, Single Compartment, EA



**Product Code:** DY70822  
**Category:** Shave Prep Tray  
**Brand:** Diversa

## Surgical Equipment > Surgical Scrub Brushes & Topical Antiseptics

[View](#)

### Betadine Scrub Brush w/ Povidone Iodine 1%, 30/Bx



**Product Code:** 372053  
**Category:** Surgical Scrub Brushes & Topical Antiseptics  
**Brand:** Diversa

### Betadine Scrub Brush w/ Povidone Iodine 1%, 30/Bx - BD E-Z Scrub Dry Sterile Brush, 30/Bx



**Product Code:** 371603  
**Category:** Surgical Scrub Brushes & Topical Antiseptics  
**Brand:** Diversa

**Betadine Scrub Brush w/ Povidone Iodine 1%, 30/Bx - BD E-Z Scrub with BD Ultradex<sup>®</sup>,<sup>¢</sup> Solution; 3% Chloroxylenol (PCMX) with emolli**



**Product Code:** 374081  
**Category:** Surgical Scrub Brushes & Topical Antiseptics  
**Brand:** Diversa

**Povidone-Iodine Prep Solution USP 10% 1 Gallon**



**Product Code:** 08228  
**Category:** Surgical Scrub Brushes & Topical Antiseptics  
**Brand:** Diversa

**Povidone-Iodine Scrub Solution USP 7.5%, 1 Gallon**



**Product Code:** 08328  
**Category:** Surgical Scrub Brushes & Topical Antiseptics  
**Brand:** Diversa

**Surgical Equipment > Instrument Tables** [View](#)

**SS8018 Instrument Table 20" x 16" x 34" Ea**



**Product Code:** SS8018  
**Category:** [Instrument Tables](#)  
**Brand:** Diversa

**SS8008 Instrument Table 48" x 24" x 34" Ea**



**Product Code:** SS8008  
**Category:** [Instrument Tables](#)  
**Brand:** Diversa

**SS8016 Instrument Table 30" x 16" x 34" Ea**



**Product Code:** SS8016  
**Category:** [Instrument Tables](#)  
**Brand:** Diversa

**SS8014 Instrument Table 48" x 20" x 34" Ea**



**Product Code:** SS8014  
**Category:** [Instrument Tables](#)  
**Brand:** Diversa

**SS8000 Instrument Table 72" x 24" x 34" Ea**



**Product Code:** SS8000  
**Category:** [Instrument Tables](#)  
**Brand:** Diversa

**SS8004 Instrument Table 60" x 24" x 34" Ea**



**Product Code:** SS8004  
**Category:** [Instrument Tables](#)  
**Brand:** Diversa

## Surgical Equipment > Light Handles [View](#)

### Disposable Light Handles 25/Bx



**Product Code:** 31140208  
**Category:** [Light Handles](#)  
**Brand:** Diversa

## Surgical Equipment > Basin Stands [View](#)

### Basin Stands, Twin & Single Bowl--Twin Bowl Basin Stand & Shelf



**Product Code:** SS8360  
**Category:** [Basin Stands](#)  
**Brand:** Diversa

### Basin Stands, Twin & Single Bowl--Twin Bowl Basin Stand & Shelf - Single Basin Stand w/Shelf



**Product Code:** SS8865  
**Category:** [Basin Stands](#)  
**Brand:** Diversa

## Surgical Equipment > Mayo Stands, Mobile & Post [View](#)

### Stainless Steel Mayo Stands---13" x19" Stainless Tray w/Ft Pdl



**Product Code:** SS8310  
**Category:** Mayo Stands, Mobile & Post  
**Brand:** Diversa

**Stainless Steel Mayo Stands---13" x19" Stainless Tray w/Ft Pdl - Stainless Steel Mayo Stand 16" x21" Stainless Tray w/Ft Pdl**



**Product Code:** SS8311  
**Category:** Mayo Stands, Mobile & Post  
**Brand:** Diversa

**Mobile Mayo Stands----Premuim Model w/Tray**



**Product Code:** M20  
**Category:** Mayo Stands, Mobile & Post  
**Brand:** Diversa

**Mobile Mayo Stands----Premuim Model w/Tray - Mobile Stainless Steel Mayo Stand**



**Product Code:** MS27  
**Category:** Mayo Stands, Mobile & Post  
**Brand:** Diversa

**Double & Single Post Mayo Stands----Double Post**



**Product Code:** M22  
**Category:** Mayo Stands, Mobile & Post  
**Brand:** Diversa

### Double & Single Post Mayo Stands----Double Post - Single Post Mayo Stand



**Product Code:** M21  
**Category:** Mayo Stands, Mobile & Post  
**Brand:** Diversa

### Double & Single Post Mayo Stands----Double Post - Stainless Steel Single Post Mayo Stand



**Product Code:** MS23  
**Category:** Mayo Stands, Mobile & Post  
**Brand:** Diversa

## Surgical Equipment > Hampers [View](#)

### Square Tilt Lid Hampers, White & Red Tops, ---White Tilt Lid



**Product Code:** H40  
**Category:** Hampers  
**Brand:** Diversa

### Square Tilt Lid Hampers, White & Red Tops, ---White Tilt Lid - Square Tilt Lid Hamper, Red Top



**Product Code:** H40R  
**Category:** Hampers  
**Brand:** Diversa

**18" Round Lid Hamper, Chrome & Red Top---Chrome Top**



**Product Code:** H41  
**Category:** [Hampers](#)  
**Brand:** Diversa

**18" Round Lid Hamper, Chrome & Red Top---Chrome Top - 18" Round Lid Hamper, Red Top**



**Product Code:** H41R  
**Category:** [Hampers](#)  
**Brand:** Diversa

**Economy 18" Round Hamper, No Lid**



**Product Code:** H48  
**Category:** [Hampers](#)  
**Brand:** Diversa

**Triangular Hamper w/Lid, White & Red Powder Coated, ---White Lid**



**Product Code:** H43  
**Category:** [Hampers](#)  
**Brand:** Diversa

**Triangular Hamper w/Lid, White & Red Powder Coated, ---White Lid - Triangular Hamper w/Red Top**



**Product Code:** H43R  
**Category:** [Hampers](#)  
**Brand:** Diversa



### Stainless Steel Triangular Hamper w/Lid



**Product Code:** H54  
**Category:** [Hampers](#)  
**Brand:** Diversa

### Stainless Steel Triangular Hamper w/Lid - Stainless Steel Triangular Hamper w/Red Top Lid



**Product Code:** H54R  
**Category:** [Hampers](#)  
**Brand:** Diversa

### Folding Hamper, Adjustable



**Product Code:** H42  
**Category:** [Hampers](#)  
**Brand:** Diversa

### Hamper Bags 18" & 25" Drawstring----18" Bag



**Product Code:** H18  
**Category:** [Hampers](#)  
**Brand:** Diversa

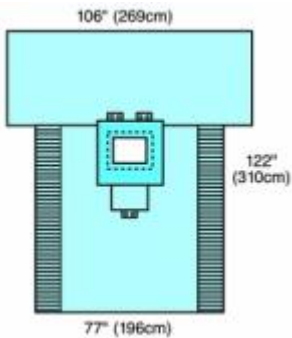
### Hamper Bags 18" & 25" Drawstring----18" Bag - 25" Hamper Bag



**Product Code:** H25  
**Category:** [Hampers](#)  
**Brand:** Diversa

## Surgical Equipment > Patient Drapes & Surgical Packs [View](#)

### Chest/Breast Surgical Drape 77" x 102", Sterile, 12/cs



**Product Code:** 29420  
**Category:** Patient Drapes & Surgical Packs  
**Brand:** Diversa

### Drape Sheet 2-Ply, White, 40" x 48", 100/cs



**Product Code:** 300  
**Category:** Patient Drapes & Surgical Packs  
**Brand:** Diversa

### Seascape Drape 40"x48", 100/cs Poly/Tissue



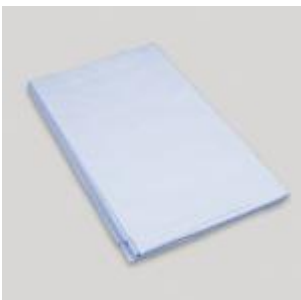
**Product Code:** 325  
**Category:** Patient Drapes & Surgical Packs  
**Brand:** Diversa

### Sterile Drape/Towel 18" x 26", 50/Bx



**Product Code:** 4410  
**Category:** Patient Drapes & Surgical Packs  
**Brand:** Diversa

### Drape Sheet, 2-Ply, 40x48 Blue, 100/cs



**Product Code:** 8122  
**Category:** Patient Drapes & Surgical Packs  
**Brand:** Diversa

### Surg Pack w/ Drape 50" x 90" 10/Cs



**Product Code:** 1005  
**Category:** Patient Drapes & Surgical Packs  
**Brand:** Diversa

### Drape Sheet 2-Ply, White, 40" x 48", 100/cs



**Product Code:** 23339  
**Category:** Patient Drapes & Surgical Packs  
**Brand:** Diversa

### Drape Sheet 2-Ply, White, 40" x 72", 50/cs



**Product Code:** 24339B  
**Category:** Patient Drapes & Surgical Packs  
**Brand:** Diversa

### Tiburon® chest/breast drape 77" x 102", EA



- Absorbent impregnated reinforcement, 22 x 30 in.
- Reinforced corners
- Cord holding tabs
- Fasteners, 16 x 17 in.
- Hydrophobic pad

**Product Code:** 29420-2  
**Category:** Patient Drapes & Surgical Packs  
**Brand:** Diversa

### Utility Drape w/Tape 15" X 26", 2/Pk, 100Pk/Cs



**Product Code:** 2405  
**Category:** Patient Drapes & Surgical Packs  
**Brand:** Diversa